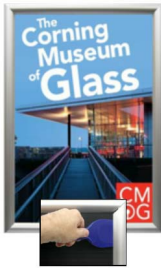


EXTRA DEEP Poster Snap Frames 10x12 (1 3/4" Security Profile for MOUNTED GRAPHICS)

FOR CURRENT PRICING, VISIT THE ID # LISTED ABOVE
FREE SHIPPING



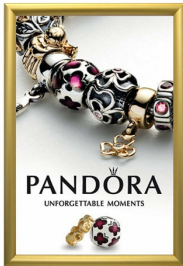
SECURITY TOOL PROVIDED



PLACE PALLET TOOL THROUGH EDGE OF SNAPFRAME



LIFT TO SNAP OPEN



Product Details

- 1 3/4" Security Snap 10 x 12 Poster Display Frame with Pallet Tool
- Quick-Changing, all 4 frame rails snap-open for easy poster changes
- Front Loading Frame for **10 x 12 posters** and other signage
- Snap Frame Profile: 1 3/4" Wide
- Narrow profile offers 1" overall off the wall depth
- **Accepts 2 Printed Thicknesses: 3/8" & 1/2"**
- Viewable Area: Moulding overlaps poster insert by 13/16" all around
- (2) Aluminum snap frame finishes available
- **1/2" Silver bottom frame rail is exposed from side view for all frame**

colors selected

- .040 Backer Board: Thin backer board provides rigidity for your 3/8" thick poster
- .020 clear PETG overlay is included to protect your 3/8" thick poster insert
- **Security Pallet Tool Included!** Ideal for high traffic, public environments.
- SwingSnap poster frames can mount either **Portrait or Landscape**
- Installs Easily: Punched holes in frame allow for easy surface mounting
- Hanging hardware included

- Aluminum snap-open displays are for **INDOOR** or ****OUTDOOR** use

****Make sure you laminate your insert material if going outdoors**
****Poster Snap Frames are weather resistant...not water-proof**

Mounted Graphic Details

3/8" Mounted Graphic Insert

All frames will include a .040 Black Backer Board

All frames will include a .020 Clear Overlay

1/2" MAX Mounted Graphic Insert

.040 Black Backer Board **NOT INCLUDED** (can not fit)

.020 Clear Overlay **NOT INCLUDED** (can not fit)

Model	Insert Size	Overall Size	Viewable Area	Ships Via	Shipping Weight	How is Frame Shipped?
SSTR134MT-DEEP-1012	10" x 12"	11 3/4" x 13 3/4"	8 3/8" x 10 3/8"	UPS	7	Assembled