

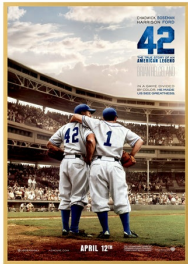
## Movie Poster Frame 24x36 | Metal Poster Display Frame in Black, Silver and Gold Finishes

FOR CURRENT PRICING, VISIT THE ID # LISTED ABOVE

### Product Details



- Simple, Elegant Movie Poster Frame 24x36
- Metal Aluminum Picture Frame Profile
- Classic Theater Style Movie Poster Frame
- Wall Mount Hanging Poster Display
- Fits 24x36 Poster, Other Printed Graphics, Photography, Signs
- Square Metal Frame Profile: **7/16" Wide**
- Overall Poster Frame Depth: **1 5/16"**
- Frame Orientation Hangs Portrait or Landscape
- (5) Aluminum frame finishes
- Viewable Area: Frame Moulding overlaps insert (poster) by **3/8"**
- You can buy this frame empty or with a backer board and acrylic window
- Metal Picture Frame ships **UNASSEMBLED**.
- Installs & Assembles Easily: Wall Hanging Hardware Included
- 24x36 Metal Movie Picture Frames **for INDOOR USE ONLY!**
- Call For Custom Poster Frame Display Sizes and Styles



### Backer Board Options

The backer board is used for placing your typical thin sheet poster, photo or artwork onto, to keep your graphic rigid. The various options, with benefits are below. If you choose **NO BACKER BOARD**, and plan on using the frame without installing your own backer, **we strongly recommend that your thin printed sheet be mounted on any type of rigid board**. Placing a thin poster into a frame without a backer board is not ideal.

#### Economy Corrugated Cardboard Backer

- This brown cardboard backer is an ideal budget conscious option

#### Foam Board (Foamcore) Backer

- Foam Board has a higher level of protection than corrugated cardboard
- White finish preserves the integrity of translucent photos well
- A perfect substrate for dry mounting objects to the backing

#### Acid-Free Foam Board (Archival)

- When preservation is the primary concern, this is the best option for protection
- Ideal choice for all frame sizes which are displaying items of personal or monetary value
- Examples: Vintage Family Photo's, Expensive Artwork, and Historic & Heirloom Documents



### Acrylic Options

We use acrylic for our frame windows. It's half the weight of glass while providing the same clarity. If you choose **NO ACRYLIC**, and plan on using the frame without inserting your own acrylic or glass window, we strongly recommend your graphic be mounted onto a board to keep it rigid. Placing a thin poster into a frame without an acrylic is not ideal.

#### Economy Clear Acrylic

- Strong lightweight acrylic provides a clear viewing window.
- This is an ideal economical choice for small to mid size frames

#### Premium Clear Acrylic

- This is a thicker more durable acrylic option than the Economy Acrylic
- Ideal choice for mid size frames to large format frames
- Strong lightweight acrylic provides a clear viewing window

#### Non-Glare Acrylic

- This is an ideal choice for all frame sizes which are near windows or under direct overhead lighting

#### Break Resistant Acrylic:

- This high impact acrylic, perfect for high traffic or public environments

#### UV Protective (Ultra-Violet) Archival Acrylic

- Protects against fading, yellowing, and loss of value
- Ideal choice for all frame sizes which are displaying items of personal or monetary value
- Examples: Vintage Family Photo's, Expensive Artwork, and Historic & Heirloom Documents

Model	Insert Size	Overall Size	Viewable Area	Ships Via	Shipping Weight
MPF-2436	24" x 36"	24 1/8" x 36 1/8"	23 1/4" x 35 1/4"	FedEx	8