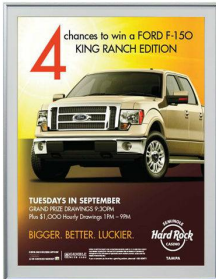


## 11x14 Picture Frames with Matboard (Classic Metal Poster Display)

FOR CURRENT PRICING, VISIT THE ID # LISTED ABOVE



### Product Details

- Classic Picture Frame
- 11x14 Frame For Photos, Posters and Other Printed Signage
- Beveled Matboard
- Rounded Metal Frame Profile: 3/8" Wide
- Overall Poster Frame Depth: 1"
- (6) Anodized aluminum frame finishes
- (4) Decorative Matte Board colors available
- Viewable Matboard Border: 1 1/4"
- Viewable Area: Matboard overlaps your insert (poster) by 1/4"
- **Frame Orientation Mounts Both [Portrait or Landscape](#)**
- You can buy this frame empty or with a backer board and acrylic window
- **Metal Picture Frame ships [UNASSEMBLED](#).**
- **Installs & Assembles Easily: Mounting hardware included**
- 11x14 Classic Metal Frames are for **INDOOR USE ONLY**
- **Call For Custom Wall Mount Poster Display Frames**

### Backing Board Options

#### **BACKING BOARD ORDERING OPTIONS**

The backing board is used for placing your typical thin sheet poster, photo or artwork onto, to keep your graphic rigid. The various options, with benefits are below;

If you choose **NO BACKER BOARD**, and plan on using the frame without installing your own backer, **we strongly recommend that your thin printed sheet be mounted on any type of rigid board.**

Placing a thin poster into a frame without a backer board is not ideal.

#### **Economy Corrugated Cardboard Backer:**

- This brown cardboard backer is an ideal budget conscious option.

#### **Foam Board (Foamcore) Backer:**

- Foam Board has a higher level of protection than corrugated cardboard.
- Its white finish preserves the integrity of translucent photos well
- Is a perfect substrate for dry mounting objects to the backing

#### **Acid-Free Foam Board (Archival):**

- When preservation is the primary concern, this is the best option for protection.
- This is an ideal choice for all frame sizes which are displaying items of personal or monetary value.
- Examples: Vintage Family Photo's, Expensive Artwork, and Historic & Heirloom Documents

### Acrylic Options

#### **ACRYLIC ORDERING OPTIONS**

We use acrylic for our frame windows. It's half the weight of glass while providing the same clarity.

If you choose **NO ACRYLIC**, and plan on using the frame without inserting your own acrylic or glass window, **we strongly recommend your graphic be mounted onto a board to keep it rigid.** Placing a thin poster into a frame without an acrylic is not ideal.

**Economy Clear Acrylic:**

- Strong lightweight acrylic provides a clear viewing window.
- This is an ideal economical choice for small to mid size frames.

**Premium Clear Acrylic:**

- This is a thicker more durable acrylic option than the Economy Acrylic.
- This is an ideal choice for mid size frames to large format frames
- Strong lightweight acrylic provides a clear viewing window .

**Non-Glare Acrylic:**

- This acrylic reduces glare from natural sunlight or artificial light.
- This is an ideal choice for all frame sizes which are near windows or under direct overhead lighting

**Break Resistant Acrylic:**

- This high impact acrylic, perfect for high traffic or public environments.

**UV Protective (Ultra-Violet) Archival Acrylic:**

- Protects against fading, yellowing, and loss of value.
- This is an ideal choice for all frame sizes which are displaying items of personal or monetary value.
- Examples: Vintage Family Photo's, Expensive Artwork, and Historic & Heirloom Documents

| Model   | Insert Size | Overall Size | Viewable Area     | Ships Via | Shipping Weight |
|---------|-------------|--------------|-------------------|-----------|-----------------|
| CF-1114 | 11" x 14"   | 14" x 17"    | 10 1/2" x 13 1/2" | FedEx     | 8               |