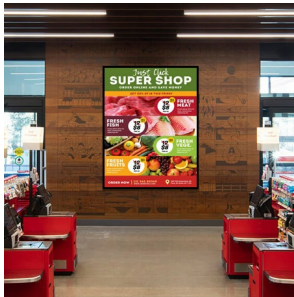


SwingSnap 8' x 25' Slim Metal Profile Banner Stretching Grip Snap Frame | Large Format 96 x 300 Graphic Size

FOR CURRENT PRICING, VISIT THE ID # LISTED ABOVE  
FREE SHIPPING



Product Details

- 8x25 Tension Gripping Banner Stretch Snap Frame
- Accepts 8'x25' Banner Size
- Snap Frame: All Four Sides Snap Open
- Slim Snap Frame Profile: 2 1/2" Wide
- Overall Depth: 1/2"
- High Grade Aluminum Alloy Frame
- Frame will not rust, drip or corrode
- Finishes Available: **Black** or **Silver**
- 96x300 Banner Hangs Loose in Frame Before Tightening
- **Accepts 18oz Solid Vinyl Scrim** (not mesh) Banner
- Banner should have raw edges (no hems, foldovers or grommets)
- Front Cap secures banner with Screws
- Tacky Tape helps with positioning banner before securing with screws
- Screw 8 x 25 frames directly into walls: brick, truck sides or other flat surfaces
- All BANNER-STRETCH™ SNAP FRAMES **Ship UNASSEMBLED**
- Requires One or More Installers depending on Banner Frame Size
- Aluminum snap-open displays for **INDOOR** or **\*\*OUTDOOR** use
- Call for Custom Banner Grip Snap Frames

Ships Unassembled

- ALL banner snap frame sizes are cut to size, and prepped for easy assembly
- Takes minutes to assemble, corner key and mounting hardware are included
- ALL snap frame lengths that are larger than **84"** will be **CUT in HALF** and provided with Straight Joiner Keys to connect the two snap frame rails together. This will create a seam in your snap frame rail where 2 or more pieces on one side of your frame will flip open. The main reason for creating the seam is to reduce shipping costs. We will ship these chopped snap frame rails via common carrier ground service.
- We can ship any Length up to **120"** in **FULL LENGTH** via Freight Carrier if need be. Please call us with your oversized snap frame dimensions to provide frame & freight costs for these custom displays.

Model	Banner Size	Overall Size	Viewable Area	Ships Via	How is Frame Shipped?
SSBGJR-8x25	96" x 300"	97 1/2" x 301 1/2"	90 1/2" x 294 1/2"	UPS (Best Way)	Unassembled