

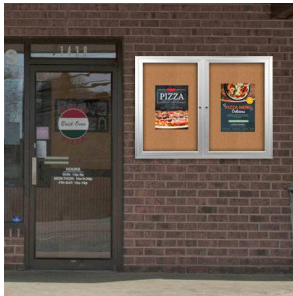
Enclosed Outdoor Bulletin Boards 60 x 30 with Interior Lighting and Radius Edge (2 DOORS)

FOR CURRENT PRICING, VISIT THE ID # LISTED ABOVE

Product Details



- Outdoor Bulletin Board
- Aluminum Display Case Construction w Radius Edges
- Overall Size: 60" Wide x 30" High
- Lighted Bulletin Board
- 2 Door Enclosed Bulletin Board
- LED Strip Lights: Long Lasting & Energy Efficient
- Wall Mounted
- Full length piano hinges supports each door
- Lockable Bulletin Board
- Security cam-lock on the front of each door (2 keys included)
- Overall Depth: 4"
- Interior Useable Depth: 2 5/8"
- 4 outdoor treated metal frame finishes
- Frame Orientation: **LANDSCAPE**
- Break Resistant Acrylic Window: Lexan Polycarbonate
- (Tempered Glass Optional)
- Self healing natural cork interior
- Weep holes provided on bottom cabinet to reduce any condensation
- Weather resistant aluminum backing with silicone sealant
- Case must be **surface mounted** on the wall
- **Can be wall mounted outdoor or indoor**
- **Free Shipping** on 2 Door Radius Edge Outdoor Display Cases (Lighted)
- **Call for Custom Outdoor Bulletin Boards**



Lighting Information

- LED strip lights are positioned on top to shine down
- Electric Cord: 3-wire center back exit (electrician needed for hardwiring)



Ordering Options

- Vinyl covering over corkboard
- Plastic Clear or Multi-Color Push Pins (100 per box)
- Door Window: **Break Resistant or Tempered Glass**
 - Break Resistant Acrylic: 1/8" thick, lightweight (Standard)
 - 1/4" Tempered Glass for public environments and locations that require this added safety feature. (Upcharge)
 - If chosen we will use our heavy duty door that will change one of 2 dimensions by 1/2". We will contact you if you do not indicate which dimension you would like adjusted in your order notes.
 - The viewable area can decrease by 1/2" or the overall size can be increased by 1/2".

Model	Overall Size	Viewable Area (per door)	Number of Doors	Ships Via	Weight
SCBBRL234-6030	60" Wide x 30" High	24 3/4" x 24"	2	Freight	51 LBS