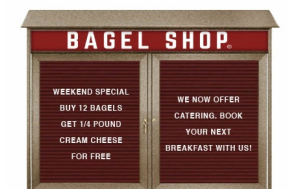


### 60" x 24" Outdoor Message Center Letter Board with Header | Wall Mount Double Door Enclosed Display Board

FOR CURRENT PRICING, VISIT THE ID # LISTED ABOVE

#### Product Details



- Outdoor Enclosed Letter Board
- Wall Mount Exterior Message Center
- 60 x 24 Letter Board Cabinet Size
- Letter Board with Changeable Letters
- Weatherproof Information Display Board
- 5" High White Message Header Panel with Your Message
- Personalized Message Header **Printed Free**
- Your Text Message: Printed Max 3" High All Caps Black Helvetica Font
- Hinged Two Door Display Case
- Faux Wood Style Display Case
- Two Sturdy Hinged Doors
- Grooved Vinyl Covered Letterboard Panel
- Locking Letter Board Display with 2 Keys
- Heavy-duty construction for years of use
- Eco-Friendly, Maintenance Free Recycled Plastic
- High Density Recycled Plastic (polyethylene construction)
- Faux Wood Design - Looks Like real Wood
- Will not crack or decay, split, rot or chip
- Impervious to water, chemicals, and insects
- Finished back panel adds structural integrity
- Removable interior letter board panel surface
- LED Illuminated display cases are Optional
- 3/4" wide main frame / 1 1/2" wide door frame
- 5 1/2" exterior depth / 3 3/4" interior depth
- 8 1/2" rain overhang cover depth
- Call For Custom Outside Message Center Sizes
- 145 piece 2" Helvetica letter / number set included

#### Recycled Plastic (Faux Wood) Construction Benefits

- UPPERCASE Helvetica vinyl lettering
- Black lettering on a 5" white header (3" max text height)

#### IMPORTANT HEADER ORDERING DETAILS

Please type your message in the text box provided below, we will try to keep your message on one line unless otherwise specified. If we can't fit your message on one line we will center your copy on two lines. For the customer that needs a specific font, color or text positioning, you may call customer service with your requests.

#### SELECT THE RIGHT OPTION FOR YOU, AND FOLLOW INSTRUCTIONS

##### STANDARD HEADER (No Charge)

Standard UPPERCASE Black Helvetica Lettering as detailed above. Make sure to spell out your header in the empty **Text Box**. Check your grammar & spelling!

##### LEAVE HEADER BLANK (No Charge)

For those customers that will be adding their own header, select this option. Make sure to enter **LEAVE BLANK** in the empty **Text Box**.

##### CUSTOM HEADER / LOGO (Upcharge)

This is for or those customers that wish to send us a specific FONT, COLOR, or LOGO. Make sure to enter **CUSTOM LOGO** in the empty **Text Box**. We will contact you once the order has been received to instruct you on how to submit the HI-Res EPS File to us.

#### Ordering Options

- Optional vinyl grooved letter boards
- Optional letter & character sets (1/2", 3/4", 1", 2", 3")

#### Lighting Options

##### LED LIGHTS - BRIGHTER & LONGER LASTING

Go GREEN with our energy saving LED Lights. Interior LED Lights are positioned on the interior to SPOTLIGHT; your posters, signage, postings, menus, and other printed announcements. LED lights are long lasting, and energy efficient. Choose from **Top Lit** or **Entire Interior Perimeter** for LED Lighting placement.

- UL approved LED Strip Lighting
- Cool White LED Lighting

- LED Life: 50,000 hours

**\*\*We provide a 3-wire cord attached to the ballast / transformer inside the display case. When installing you should use a licensed electrician / installer to bring power to the display. The installer will best decide where to exit the hardwire provided (we do not provide an exit hole as we feel its best for the installer to decide the best exit point for power supply).**

**We offer TWO LED Lighting Options as detailed below:**

**TOP LIGHTING (ONE SIDE)**

For this option we place an LED strip light on the top side of the interior display case. The light will shine downward onto the interior case, highlighting the contents inside.

**INSIDE PERIMETER (ALL 4 SIDES)**

For this option we place an LED strip light along the entire Perimeter of the interior display case. The light will shine from all 4 sides of the interior case, bringing more light intensity to the contents being displayed inside.

Model	Overall Size	Viewable Area (Per Door)	Shipping Weight	Ships Via
SD2DHLET-6024	60" Wide x 24" High	26 3/4" Wide x 15 3/8" High	50 LBS	Freight