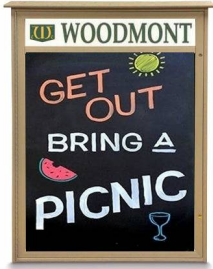


24" x 36" Outdoor Message Center Magnetic Black Dry Erase Board with Header (Left Hinged Single Door)

FOR CURRENT PRICING, VISIT THE ID # LISTED ABOVE



OVERHANG ROOF  
(BACK VIEW)



**BENEFITS**

- Maintenance Free Recycled Plastic
- Will not crack or decay, split or rot
- Impervious to water, chemicals, and insects



Product Details

- **Outdoor Black Dry Erase Message Center with Header**
- **Message Center Size 24x36**
- 5" High White Message Header Panel with Your Message
- **Personalized Message Header Printed Free**
- Your Text Message: Printed Max 3" High All Caps Black Helvetica Font
- Wall Mount, Single Door Message Board
- Weather Resistant Display Cabinet
- **Magnetic Black Dry Erase Board Interior**
- Display important messages and protect them from the elements
- Great for university campuses, parks, and golf courses
- LEFT Hinged Door: mounted on a full length piano hinge
- Locking Message Board Display
- Front CAM lock with 2 Keys
- **LED Illuminated display cases are Optional**
- **Eco-Friendly, Maintenance Free Faux Wood**
- **Recycled Plastic Construction**
- **Constructed from high density Polyethylene**
- **Will not rot, splinter or crack**
- Impervious to water, chemicals, and insects
- Finished back panel looks great and adds structural integrity
- Slanted Overhang Rain Cover
- Cabinet Withstands typical outside elements: Not flood or waterproof
- **Call For Custom Size Message Board Outdoor Display Case**
- 3/4" wide main frame
- 1 1/2" wide door frame
- 5 1/2" exterior depth
- 3 3/4" interior depth
- 8 1/2" rain cover depth

Header Details

- UPPERCASE Helvetica vinyl lettering
- **Black lettering on a 5" white header (3" max text height)**

**IMPORTANT HEADER ORDERING DETAILS**

Please type your message in the text box provided below, we will try to keep your message on one line unless otherwise specified. If we can't fit your message on one line we will center your copy on two lines. For the customer that needs a specific font, color or text positioning, you may call customer service with your requests.

**SELECT THE RIGHT OPTION FOR YOU, AND FOLLOW INSTRUCTIONS**

**STANDARD HEADER (No Charge)**

Standard UPPERCASE Black Helvetica Lettering as detailed above. Make sure to spell out your header in the empty **Text Box**. Check your grammar & spelling!

**LEAVE HEADER BLANK (No Charge)**

For those customers that will be adding their own header, select this option. Make sure to enter **LEAVE BLANK** in the empty **Text Box**.

**CUSTOM HEADER / LOGO (Upcharge)**

This is for or those customers that wish to send us a specific FONT, COLOR, or LOGO. Make sure to enter **CUSTOM LOGO** in the empty **Text Box**. We will contact you once the order has been received to instruct you on how to submit the HI-Res EPS File to us.

Ordering Options

- **Fluorescent Marker Set (5 Colors):**  
Wipes off Easily (Yellow, Pink, Blue, Green, White)
- **Dry Eraser & Spray Cleaner Combo:**  
Soft pile, the eraser collects dust and marker residue. The pump spray cleaner removes ghosting, grease, dirt, and stains with a clean dry cloth
- **Round Magnets:**  
Sold in pack of six. 1 1/4" Round Magnets to hold up notes or postings. Comes in Assorted Colors

\*All Combo Options ship in a Separate Box

## Lighting Options

### LED LIGHTS - BRIGHTER & LONGER LASTING

Go GREEN with our energy saving LED Lights. Interior LED Lights are positioned on the interior to spotlight your written messages, posters, signage, menus, and other printed announcements. LED lights are long lasting, and energy efficient. Choose from Top Lit or Entire Interior Perimeter for LED Lighting placement.

- UL approved LED Strip Lighting
- Cool White LED Lighting
- LED Life: 50,000 hours

\*\*We provide a 3-wire cord attached to the ballast / transformer inside the display case. When installing you should use a licensed electrician / installer to bring power to the display. The installer will best decide where to exit the hardwire provided (we do not provide an exit hole as we feel it is best for the installer to decide the best exit point for power supply).

We offer TWO LED Lighting Options as detailed below:

#### TOP LIGHTING (ONE SIDE)

For this option we place an LED strip light on the top side of the interior display case. The light will shine downward onto the interior case, highlighting the contents inside.

#### INSIDE PERIMETER (ALL 4 SIDES)

For this option we place an LED strip light along the entire Perimeter of the interior display case. The light will shine from all 4 sides of the interior case, bringing more light intensity to the contents being displayed inside.

Model	Overall Size	Viewable Area (Portrait)	Viewable Area (Landscape)	Shipping Weight	Ships Via
SIDMCHBDY-2436	24" x 36"	16" Wide x 22" High	28" Wide x 10" High	42 LBS	UPS