

50 x 50 Indoor Wood Enclosed Bulletin Boards with Header & Lights (2 DOORS)

FOR CURRENT PRICING, VISIT THE ID # LISTED ABOVE

Product Details

- Indoor Wood Bulletin Board
- Overall Size: 50" Wide x 50" High
- Wall Mounted
- 2 Door Enclosed Bulletin Board
- Features exposed butterfly hinges
- LED Strip Lighting (Top Lights)
- 5" White Message Header Panel
- Lockable Bulletin Board
- Security cam-lock on the front of each door (2 keys included)
- Corner Style: Classic Mitered Style
- Overall Display Case Depth: 4"
- Interior Useable Depth: 2 5/8"
- Frame Orientation: **SQUARE**
- 3 wood frame finishes
- Break Resistant Clear Acrylic Window: (Lexan Polycarbonate)
- Self sealing natural cork interior
- Case must be **surface mounted** on the wall
- Wood 50x50 2 Door Bulletin Boards For INDOOR USE ONLY
- Free Shipping
- Call for Custom Enclosed Cork Boards and Message Boards

Header Details

- UPPERCASE Helvetica vinyl lettering
- Black lettering on a 5" white header (3" max text height)

IMPORTANT HEADER ORDERING DETAILS

Please type your message in the text box when making your selections, and we will try to keep your message on one line unless otherwise specified. If we can't fit your message on one line we will center your copy on two lines. For the customer that needs a specific font, color or text positioning, you may call customer service with your requests.

ORDERING OPTIONS BELOW.

SELECT THE RIGHT OPTION FOR YOU, AND FOLLOW INSTRUCTIONS

STANDARD HEADER (No Charge)

Standard UPPERCASE Black Helvetica Lettering as detailed above. Make sure to spell out your header in the empty **Header Text** field when making your selections. Check your grammar & spelling!

LEAVE HEADER BLANK (No Charge)

For customers that will be adding their own header, select this option. Make sure to select **LEAVE HEADER BLANK** in the **Header Style** dropdown when making your selections.

CUSTOM HEADER / LOGO (Upcharge)

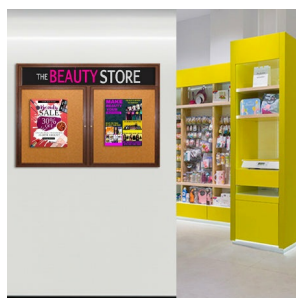
For customers that wish to send us a specific FONT, COLOR, or LOGO. Make sure to select **CUSTOM LOGO** in the **Header Style** dropdown when making your selections. We will contact you once the order has been received to instruct you on how to submit the HI-Res EPS File to us.

Lighting Information

- LED strip lights are positioned on top to shine down
- Electric Cord: 3-wire center back exit (electrician needed for hardwiring)

Ordering Options

- Painted Cork and Fabric Colors over Cork
- Fabric covering over cork
- Plastic Clear or Multi-Color Push Pins (100 per box)
- Door Window: Break Resistant or Tempered Glass
 - Break Resistant Acrylic: 1/8" thick, lightweight (Standard)
 - 1/4" Tempered Glass for public environments and locations that require this added safety feature. (Upcharge)
 - If chosen we will use our heavy duty door that will change one of 2 dimensions by 1/2". We will contact you if you do not indicate which dimension you would like adjusted in your order notes.
 - The viewable area can decrease by 1/2" or the overall size can be increased by 1/2".



Model	Overall Size	Viewable Area	Number of Doors	Ships Via	Product Weight
-------	--------------	---------------	-----------------	-----------	----------------

SCBBIWHL23-5050	50" Wide x 50" High	21 3/4" x 41 1/8"	2	Freight	53 LBS
-----------------	---------------------	-------------------	---	---------	--------