

## 60 x 24 WOOD Indoor Enclosed Bulletin Cork Boards with Message Header (2 DOORS)

FOR CURRENT PRICING, VISIT THE ID # LISTED ABOVE

### Product Details

- Indoor Wood Framed Bulletin Board
- 2 Door Enclosed Cork Bulletin Board
- **Overall Size: 60" Wide x 24" High**
- Wall Mounted Display Case
- 5" High White Header Panel
- Hinged Doors
- Lockable Bulletin Board
- Security cam-lock on the front of each door (2 keys included)
- Corner Style: Classic Mitered Style
- Overall Display Case Depth: 2"
- Interior Useable Depth: 5/8"
- 60x24 Message Display Board in **LANDSCAPE** orientation
- 3 wood frame finishes
- Break Resistant Clear Acrylic:
- Self sealing natural cork interior
- Case must be **surface mounted** on the wall
- **FREE SHIPPING: 60x24 Indoor Enclosed Bulletin Boards w Header**
- **Call for Custom Indoor and Outdoor Display Cases**

### Header Details

- UPPERCASE Helvetica vinyl lettering
- **Black lettering on a 5" white header (3" max text height)**

### IMPORTANT HEADER ORDERING DETAILS

Please type your message in the text box provided below, we will try to keep your message on one line unless otherwise specified. If we can't fit your message on one line we will center your copy on two lines. For the customer that needs a specific font, color or text positioning, you may call customer service with your requests.

#### SELECT THE RIGHT OPTION FOR YOU, AND FOLLOW INSTRUCTIONS

##### STANDARD HEADER (No Charge)

Standard UPPERCASE Black Helvetica Lettering as detailed above. Make sure to spell out your header in the empty **Text Box** above the Green ADD to CART button. Check your grammar & spelling!

##### LEAVE HEADER BLANK (No Charge)

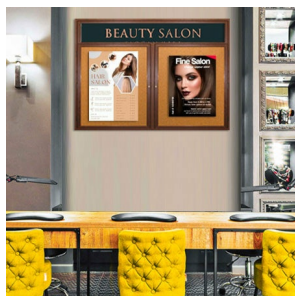
For those customers that will be adding their own header, select this option. Make sure to enter **LEAVE BLANK** in the empty **Text Box** above the Green ADD to CART button.

##### CUSTOM HEADER / LOGO (Upcharge)

This is for or those customers that wish to send us a specific FONT, COLOR, or LOGO. Make sure to enter **CUSTOM LOGO** in the empty **Text Box** above the Green ADD to CART button. We will contact you once the order has been received to instruct you on how to submit the HI-Res EPS File to us.

### Ordering Options

- Painted Cork and Fabric Colors over Cork
- Plastic Clear or Multi-Color Push Pins (100 per box)
- **Door Window: Break Resistant or Tempered Glass**
  - Break Resistant Acrylic: 1/8" thick, lightweight (Standard)
  - 1/4" Tempered Glass for public environments and locations that require this added safety feature. (Upcharge)
    - If chosen we will use our heavy duty door that will change one of 2 dimensions by 1/2". We will contact you if you do not indicate which dimension you would like adjusted in your order notes.
    - The viewable area can decrease by 1/2" or the overall size can be increased by 1/2".



Model	Overall Size	Viewable Area (per door)	Number of Doors	Ships Via	Weight
-------	--------------	--------------------------	-----------------	-----------	--------

SCBBIWH23-6024	60" Wide x 24" High	26 3/4" x 15 1/8"	2	Freight	34 LBS
----------------	---------------------	-------------------	---	---------	--------