

36x36 Shadow Box Display Case with Glass Shelves Metal Framed SUPER WIDE-FACE (7" Deep)

FOR CURRENT PRICING, VISIT THE ID # LISTED ABOVE

Product Details

- **Large 36x36 Shadow Box Display Case with GLASS SHELVES**
- **Super Wide Face Metal (Aluminum) Frame Profile: 2 3/8" Wide**
- **7 Inch Interior Depth**
- Enclosed, Wall Mount Shadow Box
- Empty Shadow Box 36" x 36"
- Patented swing-open display frame system (opens right to left)
- Features Concealed Hinges and Gravity Lock
- Overall Shadow Box Depth: **8 3/4"** (this includes the front flanged frame)
- (2) Shadow Box Frame Finishes: **Anodized Aluminum or Satin Black**
- Exterior Box Sides: Exterior Laminate will compliment the frame finish.
- Standard Backing Board: Wood 1/2" White or Black come standard (Brushed Silver Metal Laminate is Optional)
- Break Resistant Acrylic: Perfect for high traffic or public environments
- Installs Easily: Wall Mounting hardware included
- 36x36 Super Wide Face Shadow Boxes **For indoor use only!**
- **Call for Custom SwingFrame Wall Shadow Box 36x36 Display Case**

****These shadow boxes can be surface mounted or recessed. If you are planning to recess these boxes, please call us to confirm the overall outside back box dimensions. The flanged picture frame which is placed over the back box will also need some clearance for the frame door to swing-open.**

Additional Ordering Options

- Interior Box Finish: White or Black Melamine | or Complimentary Laminate
- Optional Backer Board: Fabric over Cork Board (6 Colors, see below)
- Side Plunge Lock & Key
- Shelf Ordering Information
- LED Interior Lighting

SwingFrame Shadowbox with Shelves Custom Options Include:

Custom shadow box sizes, custom shadow box frames, deep shadow box sizes, lit shadow boxes, side locks for security, cork board backer, fabric backer, alternate laminate backer, and additional shelves
(Call for Details)

Shelf Information

Metal Shelf Support Clips ()

- Shadowboxes with an interior size of 48" or less, receive metal support clips
- Shelf holes are aligned on the interior sides for shelf height adjustment
- Shelf holes are spaced out 2 1/2" apart down the interior sides
- (4) shelf clips per shelf are included (sized to fit the pre-drilled shelf holes)
- If you select a Fabric Cork Board Backer, the overall depth is **reduced by 1/4"**

***IF YOU'RE PLANNING ON DISPLAYING HEAVY ITEMS AND WOULD PREFER TO HAVE STANDARDS WITH SHELF BRACKETS INSTALLED FOR ADDED SUPPORT, CALL US FOR A QUOTE!**

Standards with Shelf Brackets ()

Shelf Options

Number of Glass Shelves (Order up to 6 for your Display Case)

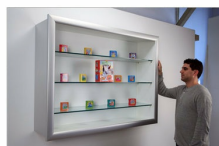
- Choose between 1, 2, 3, 4, 5 or 6 shelves for your shadowbox display
- Additional shelves or replacement shelves are available upon request

Annealed Glass Shelves (1/4" Thick)

- Most display cases sold come standard with 1/4" thick plate glass
- 1/4" thick plate glass with buffed edges is ideal for lightweight items

Annealed Glass Shelves (3/8" Thick)

- 3/8" thick glass with buffed edges provide an elegant sturdy shelf
- The 3/8" thickness is perfect for heavier items being placed inside the display case while presenting an impressive look for your interior environment



ADJUST YOUR SHELVES AS NEEDED



- * 3/8" thick glass is recommended for shelves wider than 36"

IF YOU'RE INTERESTED IN TEMPERED GLASS SHELVES,
PLEASE CONTACT CUSTOMER SERVICE FOR A QUOTE!

Lighting Specifications

- UL approved LED Strip Lighting
- LED Color: Cool White
- LED Life: 50,000 hours (5 Year Warranty)
- Cord exit is positioned out the back of the display case ([Top Left Corner](#))

We offer TWO LED Lighting Options as detailed below;

TOP LIGHTING (ONE SIDE)

For this option we place an LED strip light on the top side of the interior display case. The light will shine downward onto the interior case, highlighting the contents inside.

INSIDE PERIMETER (ALL 4 SIDES)

For this option we place an LED strip light along the entire Perimeter of the interior display case. The light will shine from all 4 sides of the interior case, bringing more light intensity to the contents being displayed inside.

****THE BOX WILL APPEAR BRIGHTER WHEN A WHITE OR LIGHTER INTERIOR IS CHOSEN. THE DARKER THE INTERIOR, THE LESS THE LIGHT WILL TRAVEL AND SPREAD. KEEP THIS IN MIND, AS WELL AS THE LIGHTING ENVIRONMENT YOU WILL BE PLACING THIS SHADOW BOX DISPLAY CASE INTO, WHEN CHOOSING THE LED LIGHTING OPTION WHICH WILL WORK BEST FOR YOUR APPLICATION.**

We offer TWO Power Supply Options as detailed below;

12v PLUG-IN ADAPTER

The 12v Plug-In Adapter can be plugged into any standard wall outlet. They come in Black or White, along with its wiring. The plug has a wire that is 5 feet to the power supply, then additional 3-4 feet depending on the adapter wattage capacity (see specs below for more information).

12v DRIVER for HARDWIRED APPLICATIONS

For this option a licensed electrician will be required to provide power to the display case . The benefit of this option is that the wires and power source (driver) can be concealed by the electrician (see specs below for more information).

Model	Interior Dimensions	Overall Outside Dimensions	Viewable Area	Orientation	Ship Wt.
SBMW-SHELF7-3636	36" x 36" x 7"	39" x 39"	34 1/4" x 34 1/4"	Square	118