



A DIVISION OF ACCESS DISPLAY GROUP, INC.

TEL: 844-409-1138 FAX: 877-842-5126
E-MAIL: info@bulletinboards4sale.com

Product Sheet

Item ID # OFLBV-2030

Open Face Vinyl Letter Board 20x30 Aluminum Frame

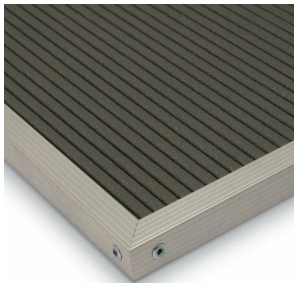
FOR CURRENT PRICING, VISIT THE ID # LISTED ABOVE
FREE SHIPPING



Product Details

- **Framed Letter Board**
- Vinyl Letter Board
- Overall Vinyl Letter Board Size: 20 x 30
- Overall Frame Depth: 1/2"
- **Silver aluminum trim (3/4" wide)** borders the vinyl letter board
- Attractive vinyl letterboard with 1/4" grooves allows for easy letter and number insertion
- **3/4" White Helvetica letters and numbers included (290 Characters)**
- Hanging Hardware is riveted onto the back for easy wall or ceiling mount
- Open Face letter boards display 20x30 for **INDOOR or OUTDOOR** use
- **Call for Custom Framed Letterboards Vinyl or Fabric**

NOTE: If used outdoors, the letter board should be covered by an over-hang or enclosed in a case. It is not meant for outdoor use with direct exposure to inclement weather.



Ordering Options

- Frame Orientation: Portrait or Landscape
- Optional colors for vinyl letterboard panel
- Optional letter & character sets (1/2", 3/4", 1", 2", 3")

***CUSTOM SIZES AVAILABLE | CALL US**



Model	Overall Letter Board Size	Ships Via	Shipping Weight
OFLBV-2030	20" x 30"	UPS	19