

Wide-Wood 20" x 20" Enclosed Bulletin Board SwingFrames

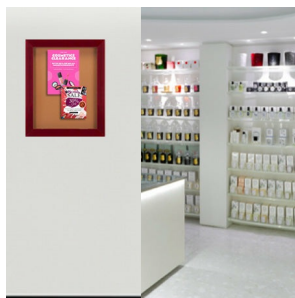
FOR CURRENT PRICING, VISIT THE ID # LISTED ABOVE

Product Details

- Enclosed 20 x 20 Bulletin Board
- Patented swing-open frame system (opens right to left)
- Features Concealed Hinges and Gravity Lock which provide a clean design
- Wood Frame Profile: 2 3/4" Wide
- Overall Depth: 2 1/4"
- Interior Useable Depth: 3/4"
- (7) popular wood finishes available
- Break Resistant Acrylic: Perfect for high traffic or public environments
- 1/4" natural cork mounted on 1/4" hardboard
- Installs Easily: Mounting hardware included
- Wide-Wood 20" x 20" Enclosed Cork Boards are for **INDOOR USE ONLY**
- [Call to Buy Custom Bulletin Board 20 x 20 Wide-Wood Swingframes](#)

Ordering Options

- Frame Orientation: Portrait or Landscape
- Fabric Covered 20" x 20" Bulletin Boards
- Lockable 20x20 Bulletin Boards with Side Plunge Lock & Key



| Model | Interior Size | Overall Size | Viewable Area | Ships Via | Shipping Weight |
|---------------|---------------|-------------------|-------------------|-----------|-----------------|
| SFWBWIDE-2020 | 20" x 20" | 24 7/8" x 24 7/8" | 19 1/8" x 19 1/8" | FedEx | 30 |