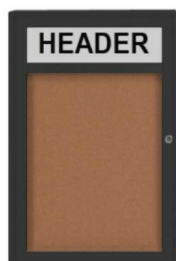
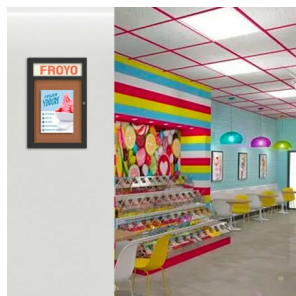


## Indoor Enclosed Bulletin Boards 8.5 x 11 with Header (Radius Edge)

FOR CURRENT PRICING, VISIT THE ID # LISTED ABOVE

### Product Details

- Indoor Enclosed Bulletin Board w Header Panel
- Radius Edges
- Wall Mount Display Case
- Single Door Bulletin Board
- Sleek radius edge frame profile with mitered corners
- Features full length piano hinge (opens right to left)
- Front Door Security Cam-Lock (2 keys included)
- 8.5 x 11 is the viewable area
- Overall Display Case Depth: 2"
- Interior Useable Depth: 5/8"
- 4 Metal frame finishes
- Break Resistant Acrylic: Perfect for high traffic indoor public locations
- Self healing natural cork interior
- 8.5 x 11 Radius Edge Enclosed Cork Bulletin Boards For INDOOR USE
- Case must be **surface mounted** on the wall
- [Call to Customize Indoor Enclosed Bulletin Board w Header](#)



### Header Details

- UPPERCASE Helvetica vinyl lettering
- Black lettering on a 5" white header (3" max text height)

### IMPORTANT HEADER ORDERING DETAILS

Please type your message in the text box provided below, we will try to keep your message on one line unless otherwise specified. If we can't fit your message on one line we will center your copy on two lines. For the customer that needs a specific font, color or text positioning, you may call customer service with your requests.

#### SELECT THE RIGHT OPTION FOR YOU, AND FOLLOW INSTRUCTIONS

##### STANDARD HEADER (No Charge)

Standard UPPERCASE Black Helvetica Lettering as detailed above. Make sure to spell out your header in the empty **Text Box** above the Green ADD to CART button. Check your grammar & spelling!

##### LEAVE HEADER BLANK (No Charge)

For those customers that will be adding their own header, select this option. Make sure to enter **LEAVE BLANK** in the empty **Text Box** above the Green ADD to CART button.

##### CUSTOM HEADER / LOGO (Upcharge)

This is for or those customers that wish to send us a specific FONT, COLOR, or LOGO. Make sure to enter **CUSTOM LOGO** in the empty **Text Box** above the Green ADD to CART button. We will contact you once the order has been received to instruct you on how to submit the HI-Res EPS File to us.

### Ordering Options

- Frame Orientation: Portrait or Landscape
- Vinyl covering over corkboard
- **Door Window: Break Resistant or Tempered Glass**
  - Break Resistant Acrylic: 1/8" thick, lightweight (Standard)
  - 1/4" Tempered Glass for public environments and locations that require this added safety feature. (Upcharge)
    - If chosen we will use our heavy duty door that will change one of 2 dimensions by 1/2". We will contact you if you do not indicate which dimension you would like adjusted in your order notes.
    - The viewable area can decrease by 1/2" or the overall size can be increased by 1/2".

Model	Interior Size	Viewable Area	Ships Via	Overall Size (Portrait)	Overall Size (Landscape)	Shipping Weight
-------	---------------	---------------	-----------	-------------------------	--------------------------	-----------------

SCBBIRH-8511	9 3/4" x 12 3/4"	8 1/2" x 11"	13 3/4" x 22 1/2"	16 1/4" x 29 1/2"	UPS	23
--------------	------------------	--------------	-------------------	-------------------	-----	----