



A DIVISION OF ACCESS DISPLAY GROUP, INC.

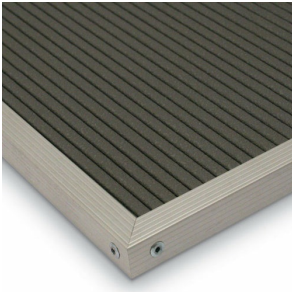
TEL: 844-409-1138 FAX: 877-842-5126  
E-MAIL: [info@bulletinboards4sale.com](mailto:info@bulletinboards4sale.com)

# Product Sheet

Item ID # OFLBV-1620

## Open Face Vinyl Letter Board 16x20 Aluminum Frame

FOR CURRENT PRICING, VISIT THE ID # LISTED ABOVE  
FREE SHIPPING



### Product Details

- Open Face Vinyl Letter Board Framed
- Overall Vinyl Letter Board Size: 16 x 20
- Overall Frame Depth: 1/2"
- Silver aluminum trim (3/4" wide) borders the vinyl letter board
- Attractive vinyl letterboard with 1/4" grooves allows for easy letter and number insertion
- 3/4" White Helvetica letters and numbers included (290 Characters)
- Hanging Hardware is riveted onto the back for easy wall or ceiling mount
- Open Face letter boards 16x20 displays for **INDOOR or OUTDOOR** use
- [Call for Custom Open Face Letterboard Frame Sizes](#)

**NOTE:** If used outdoors, the letter board should be covered by an over-hang or enclosed in a case. It is not meant for outdoor use with direct exposure to inclement weather.

### Ordering Options

- Frame Orientation: Portrait or Landscape
- Optional colors for vinyl letterboard panel
- Optional letter & character sets (1/2", 3/4", 1", 2", 3")

**\*CUSTOM SIZES AVAILABLE | [CALL US](#)**

Model	Overall Letter Board Size	Ships Via	Shipping Weight
OFLBV-1620	16" x 20"	UPS	11