

Tabletop Mini Gallery Art Bin | Choose 4 Rack Finishes | Optional Protective Print Sleeves

FOR CURRENT PRICING, VISIT THE ID # LISTED ABOVE

Product Details

- Durable **STEEL** construction
- Counter Top Colors: Black, Gray, Granite, or White
- Tray Width 7 1/2"
- Recommended Print Protector Size: 20" x 26"

Dimensions

Counter Top Art Bin **Base:** 22" x 17 1/2"

Counter Top Art Bin **Height:** 15"

Counter Top Art Bin **Weight:** 12 LBS

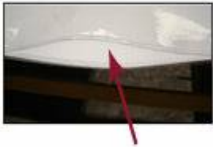
Ordering Options

Poster Sleeve Protectors:

- .008 mil clear flexible vinyl
- 2-sided 50 pt. thick, ph neutral cardboard print divider
- Extra locked stitching at stress points - prevents unraveling
- Cardboard Divider Colors: (Available in White or Black, depending on the size)

Plastic Poster Sleeve Sizes

16" x 20" | 18" x 24" | 20" x 26"



.008 CLEAR VINYL PROTECTOR

