

Roundabout Art Bins | Durable, Steel Floor Stand Print and Art Rack

FOR CURRENT PRICING, VISIT THE ID # LISTED ABOVE

Product Details

- Durable **STEEL** Construction with **Wheels**
- Colors Available: Granite or Gray
- Recommended Print Protector Size: 32" x 43"
- Holds between 35-50 art/poster prints
- Tray Width 7 1/2"
- Wheels Included
- **Optional** Print Protector Sleeves

Dimensions

Art Bin Display **Base**: 36" x 26"

Art Bin Display **Height**: 40"

Art Bin Display **Weight**: 31 LBS

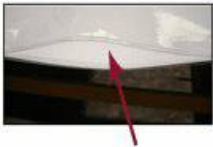
Ordering Options

Poster Sleeve Protectors:

- .008 mil clear flexible vinyl
- 2-sided 50 pt. thick, ph neutral cardboard print divider
- Extra locked stitching at stress points - prevents unraveling
- Cardboard Divider Colors: (Available in White or Black, depending on the size)

Plastic Poster Sleeve Sizes

16" x 20" | 18" x 24" | 20" x 26" | 24" x 36" | 26" x 32" | 30" x 40" | 32" x 43"



.008 CLEAR VINYL PROTECTOR

ROUNDED CORNERS

