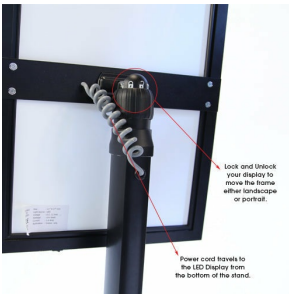


Illuminated LED Floor Display Stand with Rotating & Tilting Sign Frame (for 18" x 24" Menus & Posters)

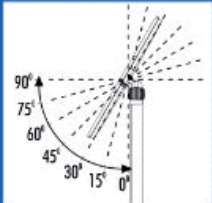
FOR CURRENT PRICING, VISIT THE ID # LISTED ABOVE

Product Details

- Lighted Floor Sign Holder / Menu Stand
- Illuminated LED Display: Rotates and Tilts with a SNAP OPEN Frame
- Sign Stand allows the frame to turn in **portrait & landscape** positions
- Adjust the snap frame position by unlocking the knob found in the back.
- Accepts printed Inserts **18" x 24"**, ideal for Menus, Signs, and Posters
- Packed with **11.5 ft.** electrical cable.
- All units pass UL/CE PAT tests.
- **LED** illumination saves up to **60% energy cost**.
- Aluminum Pedestal Sign Stand displays **18x24** inserts single sided
- Display Stand Finish available in **Black**
- Overall height when **PORTRAIT: 48"**
- Overall height when **LANDSCAPE: 43"**
- Rectangular Tubing: **2" x 1.5"**
- Stylized Silver Steel Base: **16.5" Wide x 12" High (9 LBS)**
- Overall Approximate Product Weight: **22 LBS**
- Adjustable Display with **18x24 Rotating and Tilting Frame for Indoor Use**
- Non-Glare Protective Overlay is included
- Comes with an easy to follow instruction sheet



TILTS 0 - 90°



Model	Insert (Poster Size)	Base Dimensions	Overall Product Weight	Overall Height (Landscape)	Overall Height (Portrait)
TKM455	18" x 24"	16.5" Wide x 12" Deep (9 LBS)	22 LBS	43"	48"