



A DIVISION OF ACCESS DISPLAY GROUP, INC.

TEL: 844-409-1133 FAX: 877-842-5126

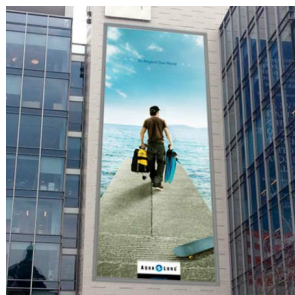
E-MAIL: [info@snapframes4sale.com](mailto:info@snapframes4sale.com)

## Product Sheet

Item ID # SSBG-4X5

### SwingSnap 4' x 5' Banner Stretching Grip Snap Frame | Large Format 48 x 60

FOR CURRENT PRICING, VISIT THE ID # LISTED ABOVE  
FREE SHIPPING



#### Product Details

- **SwingSnap Banner Stretch Snap Frame**
- **4' x 5' Banner Size**
- Indoor or Outdoor Wall Mounting | Mount on any Building Surfaces
- Snap Frame: All Four Sides Snap Open
- Snap Frame Profile: 4" Wide
- High Grade Aluminum Alloy and Stainless Steel
- **Frame will not rust, drip or corrode**
- Finishes Available: **Black or Silver**
- Banner Hangs Loose in Frame Before Tightening
- Accepts Banners with Raw Edges
- Will work with banners that have grommets, pole sockets or hemmed edges
- Frame also holds rigid, but flexible substrates including: Corrugated plastics, polystyrene or sheet metal signs
- **Maximum Thickness: 1/16"**
- Interior Frame Clamps come with interlocking teeth
- Clamps Made with Hardened Aluminum Alloy
- Adjustable Clamps Grip Banner Tight
- Easily add clamps anywhere in the frame rail to perfectly tighten banner
- **Position and Tighten Clamps by Hand**
- **Wrench Required to Further Tighten Clamps and Eliminate Any Waviness**
- Screw 4 x 5 frames directly into walls: brick or other exterior wall material
- Reuse Banner Stretch Frame on Wall: Eliminate Screwing New Wall Holes
- Requires One or More Installers depending on Banner Frame Size

#### All BANNER-STRETCH FRAMEs Ship **UNASSEMBLED**

- Aluminum snap-open displays are for **INDOOR** or **\*\*OUTDOOR** use

**\*\*Make sure you laminate your insert material if going outdoors**  
**\*\*Poster Snap Frames are weather resistant...not water-proof**

#### Ships Unassembled

- ALL banner snap frame sizes are cut to size, and prepped for easy assembly
- Takes minutes to assemble, corner key and mounting hardware are included

- ALL snap frame lengths that are larger than 84" will be **CUT in HALF** and

provided with Straight Joiner Keys to connect the two snap frame rails together.

This will create a seam in your snap frame rail where 2 or more pieces on one side of your frame will flip open.

The main reason for creating the seam is to reduce shipping costs.  
We will ship these chopped snap frame rails via common carrier ground service.

- We can ship any Length up to 120" in **FULL LENGTH** via Freight Carrier if need be.

Please call us with your oversized snap frame dimensions to provide frame & freight costs for these custom displays

**View our Instructions on How to Assemble -**

Model	Insert Size (in FEET)	Overall Size (in INCHES)	Viewable Area	Ships Via	How is Frame Shipped?
SSBG-4x5	4' x 5'	53 3/4" x 65 3/4"	45 7/8" x 57 7/8"	UPS (Best Way)	Unassembled

