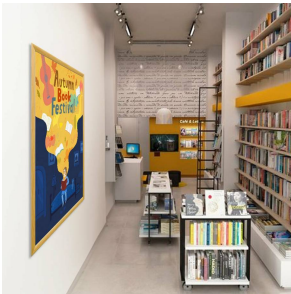
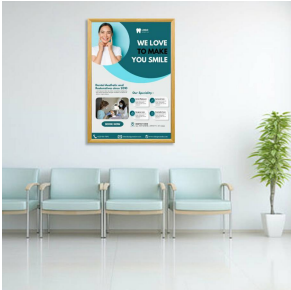


## EXTRA-LARGE Wood Snap Frames 40x60 (for MOUNTED GRAPHICS)

FOR CURRENT PRICING, VISIT THE ID # LISTED ABOVE  
FREE SHIPPING



### Product Details

- XL Wood Snap Frames for Mounted Graphics 40x60
- SwingSnap Wall Mount Poster Frame and Sign Holder
- Faux Wood Snap Frame Profile: **1 1/4" Wide**: in 3 Finishes
- 3 Simulated Wood Wrap Finishes: **Maple, Cherry, Oak**
- Quick-Changing, all 4 Frame Rails Snap Open for Easy Poster Changes
- Front Loading Frame for Graphic Signage
- Narrow Frame Profile Offers 11/16" Overall Off-the-Wall Depth
- Accepts 3 Poster Thicknesses: **1/8" | 3/16" | 1/4"**
- Viewable Area: Moulding Overlaps Poster Insert by 3/8" All Around
- (3) Simulated Wood Wrap: Resembles Real Wood
- .040 Backing Board: Provides Rigidity for Thin Posters
- .020 Clear PETG Overlay Included to Protect Poster Insert
- **No Tools!** All Four Frame Sides Snap Open Easily by Hand
- SwingSnap Poster Snap Frames Mount Portrait or Landscape
- Installs Easily: Punched Holes in the Frame Back for Surface Mounting
- Hanging Hardware (screws + wall anchors) Included
- **Free Shipping**
- Contact Us for Custom Snap Frame Sizes in Metal and Wood

All XL Wood Snap Frame Sizes Ship **UNASSEMBLED**

### Ships Unassembled

- ALL snap frame sizes are cut to size, and prepped for easy assembly
- Takes minutes to assemble, Corner Key and Mounting Hardware Included
- Backing Board is rolled up and placed into box for shipping cost savings
- Clear Overlay is rolled up and placed into box for shipping cost savings

.....

- ALL snap frame rail sizes 85" and larger will be **CUT in HALF** and

provided with a Straight Joiner Key to connect the two snap frame rails together.

This will create a seam in your snap frame rail where 2 or more pieces on one side of your frame will flip open.

The main reason for creating the seam is to reduce shipping costs. We will ship these chopped snap frame rails via common carrier ground service.

- We will ship any Length up to 144" in **FULL LENGTH** via Freight Carrier.

Please call us for your oversized snap frame dimensions to provide frame & freight costs

.....

For Detailed Instructions on How to Assemble click on the Instruction Sheet **ICON** up above.

### Mounted Graphic Details

**1/8" Mounted Graphic Insert**  
All frames will include a .040 Black Backer Board  
All frames will include a .020 Clear Overlay

**3/16" Mounted Graphic Insert**  
All frames will include a .040 Black Backer Board  
All frames will include a .020 Clear Overlay

**1/4" MAX Mounted Graphic Insert**  
.040 Black Backer Board **NOT INCLUDED** (can not fit)  
.020 Clear Overlay **NOT INCLUDED** (can not fit)

Custom Sizes & Shipping Options Available

- Call to customize XL Mounted Wood Poster Snap Frames 40x60!
- If you request a Snap Frame to be FULLY ASSEMBLED,

please call for a shipping quote.

- Call us to quote out snap frames sizes up to 144" x 144" (12 FEET x 12 FEET)

[QUICK CHANGE SNAP FRAMES](#)

[CUSTOM SNAP FRAMES](#)

[MOUNTING INSTRUCTIONS](#)

[ASSEMBLY INSTRUCTIONS](#)

Model	Insert Size	Overall Size	Viewable Area	Ships Via	Shipping Wt	How is Frame Shipped?
SSMCWOODXLMT-4060	40" x 60"	41 3/4" x 61 3/4"	39 1/4" x 59 1/4"	UPS	22	Unassembled