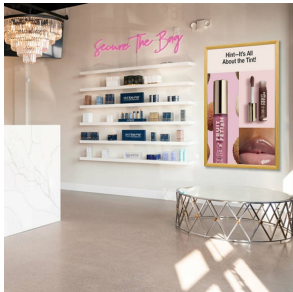


## EXTRA-LARGE Wood Snap Frames 36x84 (for MOUNTED GRAPHICS)

FOR CURRENT PRICING, VISIT THE ID # LISTED ABOVE  
FREE SHIPPING



### Product Details

- Quick-Changing, all 4 frame rails snap-open for easy poster changes
- Front Loading Frame for **36x84 posters** and other signage
- Snap Frame Profile: **1 1/4" Wide**
- **Narrow profile offers 11/16" overall off the wall depth**
- **Accepts 3 Poster Thicknesses: 1/8" | 3/16" | 1/4"**
- Viewable Area: Moulding overlaps poster insert by 3/8" all around
- (3) Wood Simulated Snap Frame Finishes Available
- .040 Backing Board: Thin, durable backer board provides rigidity for your poster
- .020 clear PETG overlay is included to protect your poster insert
- No Tools! All four frame sides snap-open easily by hand
- SwingSnap poster frames can mount either **Portrait or Landscape**
- Installs Easily: Punched holes in frame allow for easy surface mounting
- Hanging hardware is included

### Snap Frames 36 x 84 Shipped UNASSEMBLED

### Ships Unassembled

- ALL snap frame sizes are cut to size, and prepped for easy assembly
- Takes minutes to assemble, Corner Key and Mounting Hardware Included
- Backing Board is rolled up and placed into box for shipping cost savings
- Clear Overlay is rolled up and placed into box for shipping cost savings

- ALL snap frame rail sizes 85" and larger will be **CUT in HALF** and provided with a Straight Joiner Key to connect the two snap frame rails together.

This will create a seam in your snap frame rail where 2 or more pieces on one side of your frame will flip open.

The main reason for creating the seam is to reduce shipping costs. We will ship these chopped snap frame rails via common carrier ground service.

- We will ship any Length up to 144" in **FULL LENGTH** via Freight Carrier.

Please call us for your oversized snap frame dimensions to provide frame & freight costs

**For Detailed Instructions on How to Assemble click on the Instruction Sheet ICON up above.**

### Mounted Graphic Details

**1/8" Mounted Graphic Insert**  
All frames will include a .040 Black Backer Board  
All frames will include a .020 Clear Overlay

**3/16" Mounted Graphic Insert**  
All frames will include a .040 Black Backer Board  
All frames will include a .020 Clear Overlay

**1/4" MAX Mounted Graphic Insert**  
.040 Black Backer Board **NOT INCLUDED** (can not fit)  
.020 Clear Overlay **NOT INCLUDED** (can not fit)

### Custom Sizes & Shipping Options Available

- **Call to customize XL Mounted Wood Poster Snap Frames 36x84!**
- If you request a Snap Frame to be FULLY ASSEMBLED,

please call for a shipping quote.

- Call us to quote out snap frames sizes up to 144" x 144" (12 FEET x 12 FEET)

[QUICK CHANGE SNAP FRAMES](#)

[CUSTOM SNAP FRAMES](#)

[MOUNTING INSTRUCTIONS](#)

[ASSEMBLY INSTRUCTIONS](#)

Model	Insert Size	Overall Size	Viewable Area	Ships Via	Shipping Wt	How is Frame Shipped?
SSMCWOODXLMT-3684	36" x 84"	37 3/4" x 85 3/4"	35 1/4" x 83 1/4"	UPS	30	Unassembled