

Extra Large 36x60 Poster Snap Frame Security-Style with Pallet Tool | Fast-Change Aluminum Snap Open Profile 1 1/4" Wide

FOR CURRENT PRICING, VISIT THE ID # LISTED ABOVE
FREE SHIPPING



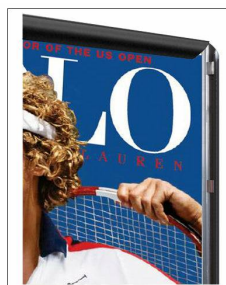
SECURITY TOOL PROVIDED



PLACE PALLET TOOL THROUGH EDGE OF SNAPFRAME



LIFT TO SNAP OPEN



Product Details

- Security-Style Snap Lock Poster Display Frame
- Extra Large 36x60 Snap Frame + Pallet Tool
- Quick-Changing, all 4 Frame Rails Snap-Open
- Aluminum Snap Frame Profile: **1 1/4" Wide**
- Pallet Tool Flips-Up the Super Tight "Spring-Loaded" Frame Rails
- Front Loading Frame for 36x60 Posters and Other Signage
- Narrow profile offers 11/16" overall off-the-wall depth
- Accepts printed material up to **1/16" thick**
- Viewable Area: Moulding overlaps poster insert by 3/8" all around
- Three Aluminum Snap Frame Finishes
- .040 Backing Board: provides rigidity for thin poster sheet
- .020 clear PETG overlay included to protect poster insert
- **Security Tool Included!** Ideal for high-traffic, public areas
- SwingSnap Poster Frames mount **Portrait** or **Landscape**
- Installs Easily: Punched holes in frame for easy surface mounting
- Hanging hardware (screws + wall anchors) included
- Contact Us for Custom Snap Frames, Large and Small Sizes
- Aluminum snap-open displays are for **Indoor** or ****Outdoor** use

**Be sure to laminate your insert material if going outdoors

**Poster Snap Frames are weather resistant, not waterproof

Ships Unassembled

- ALL snap frame sizes are cut to size, and prepped for easy assembly
- Takes minutes to assemble, Corner Key and Mounting Hardware Included
- Backing Board is rolled up and placed into box for shipping cost savings
- Clear Overlay is rolled up and placed into box for shipping cost savings

- ALL snap frame rail sizes 85" and larger will be **CUT in HALF** and

provided with a Straight Joiner Key to connect the two snap frame rails together.

This will create a seam in your snap frame rail where 2 or more pieces on one side of your frame will flip open.

The main reason for creating the seam is to reduce shipping costs. We will ship these chopped snap frame rails via common carrier ground service.

- We will ship any Length up to 144" in **FULL LENGTH** via Freight Carrier.

Please call us for your oversized snap frame dimensions to provide frame & freight costs

For Detailed Instructions on How to Assemble click on the Instruction Sheet ICON up above.

Custom Sizes & Shipping Options Available

- [Contact Us for Custom Security Snap Frame Sizes](#)
- If you request a Snap Frame to be FULLY ASSEMBLED, please call for a shipping quote.
- Contact us to quote out snap frames sizes up to 144" x 144" (12 FEET x 12 FEET)

Model	Insert Size	Overall Size	Viewable Area	Ships Via	Shipping Wt	How is Frame Shipped?
-------	-------------	--------------	---------------	-----------	-------------	-----------------------

SSTRXL-3660	36" x 60"	37 3/4" x 61 3/4"	35 1/4" x 59 1/4"	UPS	21	Unassembled
-------------	-----------	-------------------	-------------------	-----	----	-------------