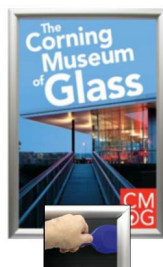


## 36" x 48" Poster Snap Open Frames, 1 3/4" Security-Style for Mounted Graphics for 1/8", 3/16", and 1/4" Thick Boards

FOR CURRENT PRICING, VISIT THE ID # LISTED ABOVE  
FREE SHIPPING



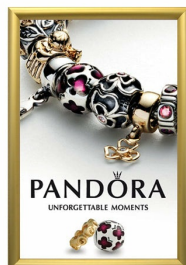
SECURITY TOOL PROVIDED



PLACE PALLET TOOL THROUGH EDGE OF SNAPFRAME



LIFT TO SNAP OPEN



### Product Details

- Security-Style Snap Poster Frame with Pallet Tool
- Extra Large Snap Frame for 36 x 48 Posters
- **Includes Pallet Tool** to Flip Open Frame Sides
- Quick-Changing, all 4 frame rails snap-open
- Front Loading Frame for posters and other signage
- Snap Frame Profile: **1 3/4" Wide**
- Narrow profile offers 3/4" overall off the wall depth
- Accepts 3 Printed Thicknesses: **1/8" | 3/16" | 1/4"**
- Viewable Area: Moulding overlaps poster insert by 13/16" all around
- (3) Aluminum snap frame finishes
- .040 Backing Board: provides rigidity for thin poster
- .020 clear PETG overlay included to protect your poster insert
- Security Snap frame for high traffic, public environments.
- SwingSnap Poster Frames Mount Portrait or Landscape
- Installs Easily: Punched holes in frame for easy surface mounting
- Hanging hardware is included

Aluminum snap-open displays are for INDOOR or \*\*OUTDOOR use

\*\*Make sure you laminate your insert material if going outdoors

\*\*Poster Snap Frames are weather resistant, not water-proof

### Mounted Graphic Details

#### 1/8" Mounted Graphic Insert

All frames will include a .040 Black Backer Board

All frames will include a .020 Clear Overlay

#### 3/16" Mounted Graphic Insert

All frames will include a .040 Black Backer Board

All frames will include a .020 Clear Overlay

#### 1/4" MAX Mounted Graphic Insert

.040 Black Backer Board **NOT INCLUDED** (can not fit)

.020 Clear Overlay **NOT INCLUDED** (can not fit)

Model

Insert Size

Overall Size

Viewable Area

Ships Via

Shipping Weight

How is Frame Shipped?

SSTR134MT-3048	30" x 48"	37 3/4" x 49 3/4"	34 3/8" x 46 3/8"	UPS	18	Unassembled
----------------	-----------	-------------------	-------------------	-----	----	-------------