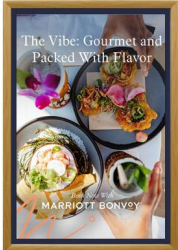
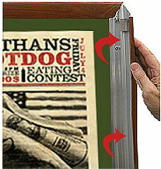


Designer Wood Snap Frames for Posters 30x40 (1" Wide Matboard)

FOR CURRENT PRICING, VISIT THE ID # LISTED ABOVE



1" VIEWABLE
MATBOARD



ALL FOUR SIDES
SNAP OPEN

Product Details

- 30x40 Snap Frame with 1" Matboard Border
- Poster snap frames 30 x 40 ships **fully assembled**
- Quick-Changing, all 4 frame rails snap-open for easy poster changes
- Holds 30x40 poster or sign
- Snap Frame Profile: 1 1/4" Wide
- Narrow profile offers 11/16" overall off the wall depth
- Accepts printed material up to 1/16" thick
- (3) Faux wood snap frame finishes available
- .040 Backing Board: Thin, durable backer board provides rigidity for your poster
- .020 clear PETG overlay is included to protect your poster insert
- No Tools! All four frame sides snap-open easily by hand
- SwingSnap poster frames can mount either **Portrait or Landscape**
- Installs Easily: Punched holes in frame allow for easy surface mounting
- Hanging hardware (screws) are included

- All Snap Poster Frames Shipped **ASSEMBLED**
- Designer snap-open sign frames are for **INDOOR USE ONLY**

Matboards Create Numerous Benefits

- The 1" wide Mat Border provides an upscale touch to your 30 x 40 poster insert with greater impact.
- Re-Printing of smaller size inserts will have cost savings.
- You can change your Mat Border colors anytime, and create an entire new look for your interior.

Matboard Details

- 1" Viewable Mat Border
- Matboard Overlaps Poster by 1" ALL AROUND
- (24) Beveled Matboard Colors Available
- Magnetic Clamps are placed onto the back of the Matboard

to secure your thin poster, graphic or image in place.

See Instruction Sheets ICON (above) for further details.

- Magnetic Clamps are will secure up to 1/16" insert thickness

Custom your Snap Frame

Model	Insert Size	Overall Size	Viewable Area	Ships Via	Shipping Wt	How is Frame Shipped?
SSMCWOODMAT1-3040	30" x 40"	32 1/2" x 42 1/2"	28" x 38"	FedEx	17	Assembled