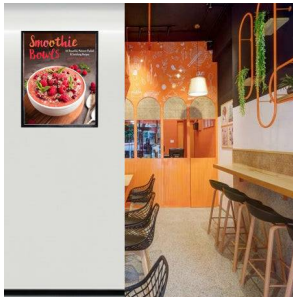
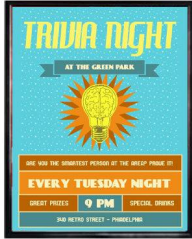


Product Sheet

Item ID # TLBS-1319

Beveled Slide-in Frame 13x19 | Top Load or Side Load Poster Frame Sign Holder | Black & Silver Metal Finishes

FOR CURRENT PRICING, VISIT THE ID # LISTED ABOVE
FREE SHIPPING



Product Details

- Slide-in 13x19 Frame
- Top Load or Side Load Frame
- Beveled Metal Frame Profile: **7/8" Wide**
- Quick-Change Frame with Slim 5/8" Depth
- Easy Slide-In Sign Frame Design
- Choose Top or Side Loading for Poster Changes
- **Slot Opening: 1/4"** (max insert thickness)
- Aluminum Frame **Accepts 13x19 Print sizes**
- Narrow frame design has 5/8" overall off-the-wall depth
- Frame size is slightly larger than the 13x19 poster inserts
- Viewable Area: Moulding overlaps poster insert by 5/16" all around
- 2 Aluminum frame finishes: Black and Satin Silver
- Frames Mount Portrait or Landscape
- Installs Easily: Punched holes in frame for easy surface mounting
- Hanging hardware screws included
- Top Load display frames 13 x 19 for **** Indoor or Outdoor Use**
- **Free Ground Shipping**
- Call for Custom Size Quick Change Poster Displays & Sign Frames

**Be sure to laminate your insert material if going outdoors
**Top Load Sign Frames are weather resistant. Not water-proof

Ordering Options

- Frame Orientation: Portrait or Landscape
- Backing Board: 3/16" thick white Coroplast (provides rigidity to your poster)

- (this is recommended if your poster is not mounted)

Acrylic Window

(backer board & acrylic are used to sandwich your insert)

- **Clear Acrylic (.040 Thickness)...(See Pricing)**

- Strong lightweight acrylic provides a clear viewing window

- **Non-Glare (.060 Thickness)...(See Pricing)**

- Reduces glare from natural or artificial light

- **Break Resistant (.080 Thickness)...(See Pricing)**

- High Impact acrylic, perfect for high traffic or public environments

Model	Insert Size	Overall Size	Viewable Area	Ships Via	Shipping Weight
TLBS-1319	13" x 19"	14 1/8" x 20 1/8"	12 1/2" x 18 1/2"	FedEx	9