

Mini Gallery Art Bins with Wheels

FOR CURRENT PRICING, VISIT THE ID # LISTED ABOVE

Product Details

- Portable Mini Gallery: Poster, Art, Print Rack
- Rolling Art Bin with Casters
- Durable **STEEL** Construction
- Art Bin Finishes: Black, Gray, Granite or White
- Recommended Print Protector Size: 20" x 26"
- Scratch-Resistant Powdercoat Finishes
- **Optional** Art, Print and Poster Protector Sleeves
- Sleeves Sizes Available in 16" x 20" | 18" x 24" | 20" x 26"
- Tray Width 7 1/2"
- Wheels Included

Dimensions

Art Bin **Base**: 22 1/2" x 19"

Art Bin **Height**: 35 1/2"

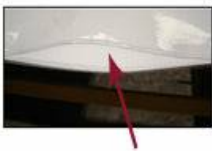
Art Bin **Weight**: 25 LBS

Ordering Options

Poster Sleeve Protectors:

- .008 mil clear flexible vinyl
- 2-sided 50 pt. thick, ph neutral cardboard print divider
- Extra locked stitching at stress points - prevents unraveling
- Cardboard Divider Colors: (Available in White or Black, depending on the size)

Plastic Poster Sleeve Sizes
16" x 20" | 18" x 24" | 20" x 26"



.008 CLEAR VINYL PROTECTOR