

Rolling Mini Gallery Art Bin Two-Tier, Steel Constructed Floor Stand for Browsing Prints and Posters

FOR CURRENT PRICING, VISIT THE ID # LISTED ABOVE

Product Details

- 2-Tier Art & Print Storage Bin
- Durable **STEEL** construction
- Art Bin Colors: Black, Gray, Granite, or White
- Recommended Print Protector Size: 20" x 26"
- Tray Width 7 1/2"
- Wheels Included
- Casters Lock in place providing a sturdy base when browsing prints & posters

Dimensions

Art Bin Display **Base** 22" x 24"

Art Bin Display **Height**: 41"

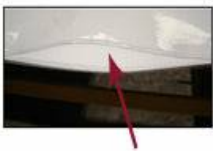
Art Bin Display **Weight**: 24 LBS

Ordering Options

Poster Sleeve Protectors:

- .008 mil clear flexible vinyl
- 2-sided 50 pt. thick, ph neutral cardboard print divider
- Extra locked stitching at stress points - prevents unraveling
- Cardboard Divider Colors: (Available in White or Black, depending on the size)

Plastic Poster Sleeve Sizes
16" x 20" | 18" x 24" | 20" x 26"



.008 CLEAR VINYL PROTECTOR