

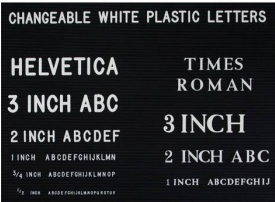
## 22x28 Changeable Letter Board Upscale Hospitality Sign Holder Floorstands

FOR CURRENT PRICING, VISIT THE ID # LISTED ABOVE



### Product Details

- **Elegant Hospitality Floor Letter Board**
- **Heavy-Duty, Upscale Directory + Message Board Stand**
- Letter Board with Changeable Letters
- 22x28 Letter Board Size
- **Open Face Frame - No Acrylic Overlay**
- Open Face Allows Easily Change of your Message
- **Black Vinyl Grooved Letter Board Panel**
- Single Post
- Single-Sided Floor Standing Letter Board Frame
- **Portrait Frame Size 22" Wide x 28" High**
- **Frame Top opening with "Lift-Top" Feature**
- Tamper-Proof concealed sign track design
- All Aluminum rustproof construction
- Made from recycled durable aluminum
- Frame corners are meticulously and permanently joined together
- **14" Diameter. Weighted Steel Base, Provides Maximum Stability**
- Includes 3/4" White Helvetica Plastic Letters Sprue Set
- **Overall Height: 63"**
- Aluminum base cover protects floors from being damaged by the base
- **Made in America**
- **22x28 Hospitality Letter Board Stand Ideal for Restaurants, Hotels**
- Open Face 22 x 28 Letterboard Floor Stand Designed [for Indoor Use](#)

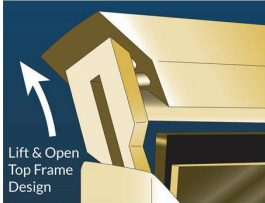


### Post Details

- Tube Diameter: **1 1/2"**
- Flat Base Diameter: **14"**
- Post / Base Weight: Approximate: **40 LBS**

### Ordering Options

- Optional letter & character sets **1/2", 3/4", 1", 2", 3"**



Model	Letterboard Size (Portrait)	Overall Height	Weight	Ships Via
GL32	22 Wide x 28 High	63"	40 LBS	UPS