

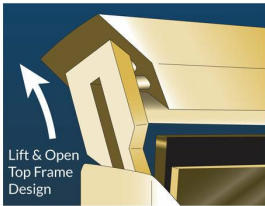
18x24 Changeable Letter Board Upscale Hospitality Wall Displays

FOR CURRENT PRICING, VISIT THE ID # LISTED ABOVE

Product Details

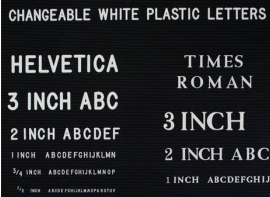


- **Elegant Hospitality Frame Letter Board**
- **Heavy-Duty, Upscale Message Display**
- Letter Board with Changeable Letters
- **Open Face Frame - No Acrylic Overlay**
- Open Face Allows Easily Change of your Message
- 18x24 Letter Board Size
- **Black Vinyl Grooved Letter Board Panel**
- **Frame Size 18" x 24"**
- **Frame Top opening with "Lift-Top" Feature**
- Tamper-Proof concealed sign track design
- All Aluminum rustproof construction
- Made from recycled durable aluminum
- Frame corners are meticulously and permanently joined together
- Includes 3/4" White Helvetica Plastic Letters Sprue Set
- **Made in America**
- **18x24 Hospitality Letter Board Wall Display Ideal for Restaurants, Hotels**
- Open Face 18 x 24 Letterboard Frames Designed **for Indoor Use**



Ordering Options

- Frame Orientation: Portrait or Landscape
- Optional letter & character sets (1/2", 3/4", 1", 2", 3")



Model	Letterboard Size	Viewable Area	Weight	Ships Via
GLW41	18" x 24"	16 3/4" x 22 3/4"	8 LBS	UPS