

16x16 Changeable Letter Board Upscale Hospitality Satin Aluminum Wall Displays

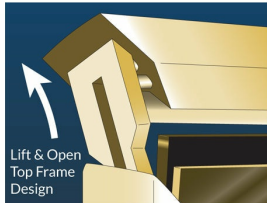
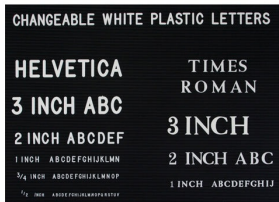
FOR CURRENT PRICING, VISIT THE ID # LISTED ABOVE

Product Details

- Elegant Hospitality Frame Letter Board
- Heavy-Duty, Upscale Message Display
- Letter Board with Changeable Letters
- **Open Face Frame - No Acrylic Overlay**
- Open Face Allows Easily Change of your Message
- 16x16 Letter Board Size
- **Black Vinyl Grooved Letter Board Panel**
- **Square Frame Size 16" Wide x 16" High**
- **Frame Top opening with "Lift-Top" Feature**
- Tamper-Proof concealed sign track design
- All Aluminum rustproof construction
- Made from recycled durable aluminum
- Frame corners are meticulously and permanently joined together
- Includes 3/4" White Helvetica Plastic Letters Sprue Set
- **Made in America**
- **16x16 Hospitality Letter Board Wall Display** Ideal for Restaurants, Hotels
- Open Face 16 x 16 Letterboard Frames Designed **for Indoor Use**

Ordering Options

- Frame Orientation: Square
- Optional letter & character sets (1/2", 3/4", 1", 2", 3")



| Model | Letterboard Size | Viewable Area | Weight | Ships Via |
|-------|-------------------|-------------------|--------|-----------|
| GLW38 | 16 Wide x 16 High | 14 3/4" x 14 3/4" | 8 LBS | UPS |