

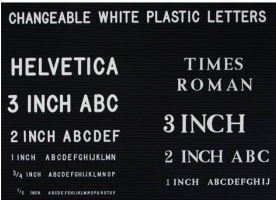
## 20x20 Changeable Letter Board Upscale Hospitality Satin Aluminum Wall Displays

FOR CURRENT PRICING, VISIT THE ID # LISTED ABOVE

### Product Details

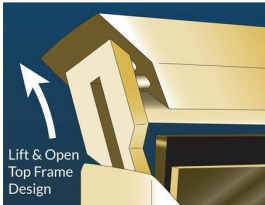


- **Elegant Hospitality Frame Letter Board**
- **Heavy-Duty, Upscale Message Display**
- Letter Board with Changeable Letters
- **Open Face Frame - No Acrylic Overlay**
- Open Face Allows Easily Change of your Message
- 20x20 Letter Board Size
- **Black Vinyl Grooved Letter Board Panel**
- **Square Frame Size 20" Wide x 20" High**
- Frame Top opening with "Lift-Top" Feature
- Tamper-Proof concealed sign track design
- All Aluminum rustproof construction
- Made from recycled durable aluminum
- Frame corners are meticulously and permanently joined together
- Includes 3/4" White Helvetica Plastic Letters Sprue Set
- **Made in America**
- **20x20 Hospitality Letter Board Wall Display** Ideal for Restaurants, Hotels
- Open Face 20 x 20 Letterboard Frames Designed **for Indoor Use**



### Ordering Options

- Frame Orientation: Square
- Optional letter & character sets (1/2", 3/4", 1", 2", 3")



Model	Letterboard Size	Viewable Area	Weight	Ships Via
GLW42	20 Wide x 20 High	18 3/4" x 18 3/4"	8 LBS	UPS