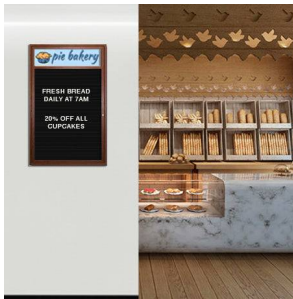


## Indoor LED Lighted Enclosed Wood Framed Letter Boards with Header | Wall Mount Single Door Display Case

FOR CURRENT PRICING, VISIT THE ID # LISTED ABOVE

### Product Details

- **Indoor Interior LED Lit Enclosed Letter Board**
- Sleek, Durable Wood Frame with mitered corners
- Wood Framed Letter Board with Changeable Letters
- **5" High Visible White Message Header Panel**
- Features full length piano hinges (opens right to left)
- Locking Letter Board
- Security cam-lock positioned on front of frame (2 keys included)
- Overall Cabinet Depth: **4"**
- Interior Useable Depth: **2 5/8"**
- **3** frame finishes
- Break Resistant Acrylic: Ideal for high traffic or indoor public environments
- Standard Black felt letter board allows for easy letter and number insertion
- **3/4"** White Helvetica letters / numbers included (290 Character Sprue Set)
- **Free Shipping on 5 large Letter Board Sizes** (see Size Chart ICON for details)
- Enclosed LED Letterboard displays are for **INDOOR** use Only
- **Call for Custom Indoor and Outdoor Letter Board Display Cases**



### Header Details

- UPPERCASE Helvetica vinyl lettering
- **Black lettering on a 5" white header (3" max text height)**

### IMPORTANT HEADER ORDERING DETAILS

Please type your message in the text box provided below, we will try to keep your message on one line unless otherwise specified. If we can't fit your message on one line we will center your copy on two lines. For the customer that needs a specific font, color or text positioning, you may call customer service with your requests.

#### SELECT THE RIGHT OPTION FOR YOU, AND FOLLOW INSTRUCTIONS

##### STANDARD HEADER (No Charge)

Standard UPPERCASE Black Helvetica Lettering as detailed above. Make sure to spell out your header in the empty **Text Box** above the Green ADD to CART button. Check your grammar & spelling!

##### LEAVE HEADER BLANK (No Charge)

For those customers that will be adding their own header, select this option. Make sure to enter **LEAVE BLANK** in the empty **Text Box** above the Green ADD to CART button.

##### CUSTOM HEADER / LOGO (Upcharge)

This is for or those customers that wish to send us a specific FONT, COLOR, or LOGO. Make sure to enter **CUSTOM LOGO** in the empty **Text Box** above the Green ADD to CART button. We will contact you once the order has been received to instruct you on how to submit the HI-Res EPS File to us.

### Lighting Information

- UL approved LED Strip Lighting
- Cool White LED Lighting
- LED Life: 50,000 hours

**\*\*We provide a 3-wire cord attached to the ballast / transformer inside the display case. When installing you should use a licensed electrician / installer to bring power to the display. The installer will best decide where to exit the hardwire provided (we do not provide an exit hole as we feel its best for the installer to decide the best exit point for power supply).**

#### We offer **THREE** LED Lighting Options as detailed below;

##### TOP LIGHTING (ONE SIDE)

For this option we place an LED strip light on the top side of the interior display case. The light will shine downward onto the interior case, highlighting the contents inside.

**TWO LONGER SIDES**

For this option we place an LED strip light along the 2 longer sides of the interior display case. The light will shine from 2 sides of the interior case, bringing more highlighting to the contents inside.

**INSIDE PERIMETER (ALL 4 SIDES)**

For this option we place an LED strip light along the entire Perimeter of the interior display case. The light will shine from all 4 sides of the interior case, bringing more light intensity to the contents being displayed inside.

### Ordering Options

- Frame Orientation: Portrait or Landscape
- Optional colors for felt letterboard panel
- Optional letter & character sets (1/2", 3/4", 1", 2", 3")
- **Door Window: Break Resistant or Tempered Glass**
  - Break Resistant Acrylic: 1/8" thick, lightweight (Standard)
  - 1/4" Tempered Glass for public environments and locations that require this added safety feature. (Upcharge)
    - If chosen we will use our heavy duty door that will change one of 2 dimensions by 1/2". We will contact you if you do not indicate which dimension you would like adjusted in your order notes.
    - The viewable area can decrease by 1/2" or the overall size can be increased by 1/2".

Model	Viewable Area	Overall Size (Portrait)	Overall Size (Landscape)	Ships Via	Shipping Weight
SCILWHLED-OD1824	14 3/8" x 15 1/8"	18" x 24"	N/A	UPS	20
SCILWHLED-1824	18" x 24"	21 5/8" x 32 7/8"	27 5/8" x 26 7/8"	UPS	24
SCILWHLED-OD2436	20 3/8" x 27 1/8"	24" x 36"	N/A	UPS	25
SCILWHLED-2228	22" x 28"	25 5/8" x 36 7/8"	31 5/8" x 30 7/8"	UPS	27
SCILWHLED-2436	24" x 36"	27 5/8" x 44 7/8"	39 5/8" x 32 7/8"	Freight	31
SCILWHLED-3040	30" x 40"	33 5/8" x 48 7/8"	43 5/8" x 38 7/8"	Freight	38
SCILWHLED-OD3636	32 3/8" x 27 1/8"	36" x 36"	N/A	Freight	32
SCILWHLED-3636	36" x 36"	39 5/8" x 44 7/8"	N/A	Freight	37
SCILWHLED-3648	36" x 48"	39 5/8" x 56 7/8"	51 5/8" x 56 7/8"	Freight	42