

## Wall Mount 60x40 Outdoor Message Center Letter Board with Sliding Doors

FOR CURRENT PRICING, VISIT THE ID # LISTED ABOVE

### Product Details



- Display important messages and protect them from the elements
- **Outdoor Letter Board Message Center 60x40**
- Great for university campuses, parks, and golf courses
- **Sliding doors roll on nylon wheels with minimal effort**
- Will not rot, splinter, or crack with the high density polyethylene construction
- Finished back panel adds structural integrity
- Removable interior surface
- Ratchet Locks included with two keys
- 3/4" wide main frame / 1 1/2" wide door frame
- 5 1/2" exterior depth / 3 3/4" interior depth
- 8 1/2" rain cover depth
- **LED Illuminated display cases are Optional**
- **Call to Customize Sliding Door Message Center Letter Boards**

5 1/2" exterior depth



- **145 piece 2" Helvetica letter / number set included**

### Recycled Plastic (Faux Wood) Construction Benefits

- Maintenance Free Recycled Plastic
- Will not crack or decay, split, rot or chip
- Impervious to water, chemicals, and insects
- Finished back panel looks great and adds structural integrity



PROTECTIVE ROOF SHELTER TO PROTECT YOUR MESSAGES

### Ordering Options

- Optional vinyl grooved letterboards
- Optional letter & character sets (1/2", 3/4", 1", 2", 3")

### Lighting Options

#### LED LIGHTS - BRIGHTER & LONGER LASTING

Go GREEN with our energy-saving LED Lights. Interior LED Lights are positioned on the interior to spotlight your posters, signage, postings, menus, and other printed announcements. LED lights are long-lasting and energy-efficient. Choose from Top Lit or Entire Interior Perimeter for LED Lighting placement.

- UL-approved LED Strip Lighting
- Cool White LED Lighting
- LED Life: 50,000 hours

\*\*We provide a 3-wire cord attached to the ballast/transformer inside the display case. When installing, you should use a licensed electrician/installer to bring power to the display. The installer will best decide where to exit the hardwire provided (we do not provide an exit hole, as we feel it is best for the installer to determine the best exit point for the power supply).

We offer TWO LED Lighting Options as detailed below:

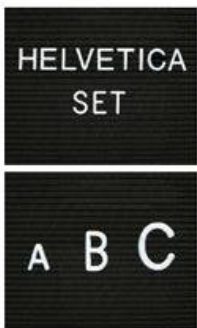
#### TOP LIGHTING (ONE SIDE)

For this option, we place an LED strip light on the top side of the interior display case. The light will shine downward onto the interior case, highlighting the contents inside.

#### INSIDE PERIMETER (ALL 4 SIDES)

For this option, we place an LED strip light along the entire Perimeter of the interior display case. The light will shine from all four sides of the interior case, bringing more light intensity to the contents being displayed inside.

2" Letter Set Included



Additional Letter Sets Available

1/2", 3/4", 1", 2" & 3"

Model	Overall Size	Product Weight	Ships Via
SDMCLB-6040	60" Wide x 40" High	94 LBS	Freight