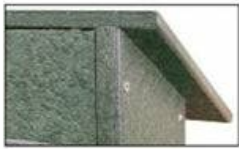


## Wall Mount Outdoor Message Center Letter Board 48" x 48" | TOP Hinged - Single Door Information Board

FOR CURRENT PRICING, VISIT THE ID # LISTED ABOVE

### Product Details

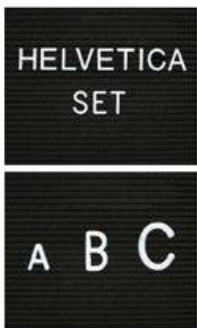
- **Wall Mount Outdoor Letter Board Message Center**
- **Enclosed Letter Board with Changeable Letters**
- **48" Wide x 48" High** Message Display Cabinet Size
- Weatherproof Information Board
- **Faux Wood Style Display Case**
- **Single Top Hinged Door**
- **Grooved Letter Board**
- Locking Letter Board Display
- Front Frame Bottom Lock, 2 Keys Included
- **LED Illuminated display cases are Optional**
- Heavy-duty construction for years of use
- Eco-Friendly and Maintenance Free
- Faux Wood Design - Looks Like real Wood
- High Density Recycled Plastic (polyethylene construction)
- Will not rot, splinter, or crack
- **Removable interior Letter Board surface**
- 3/4" wide main frame / 1 1/2" wide door frame
- 5 1/2" exterior depth / 3 3/4" interior depth
- 8 1/2" rain overhang cover depth
- **Call For Custom Outside Message Center Sizes Outdoor or Indoor**



BACK VIEW



### 2" Letter Set Included



### Additional Letter Sets Available

1/2", 3/4", 1", 2" & 3"

### 145 piece 2" Helvetica letter / number set included

### Recycled Plastic (Faux Wood) Construction Benefits

- Maintenance Free Recycled Plastic
- Will not crack or decay, split, rot or chip
- Impervious to water, chemicals, and insects
- Finished back panel looks great and adds structural integrity

### Ordering Options

- Optional vinyl grooved letterboards
- Optional letter & character sets (1/2", 3/4", 1", 2", 3")

### Lighting Options

#### LED LIGHTS BRIGHTER & LONGER LASTING

Go GREEN with our energy saving LED Lights. Interior LED Lights are positioned on the interior to SPOTLIGHT; your posters, signage, postings, menus, and other printed announcements. LED lights are long lasting, and energy efficient. Choose from **Top Lit**, **2 Longer Sides**, or the **Entire Interior Perimeter** for LED Lighting placement.

- UL approved LED Strip Lighting
- Cool White LED Lighting
- LED Life: 50,000 hours

\*\*We provide a 3-wire cord attached to the ballast / transformer inside the display case. When installing you should use a licensed electrician / installer to bring power to the display. The installer will best decide where to exit the hardwire provided (we do not provide an exit hole as we feel its best for the installer to decide the best exit point for power supply).

#### We offer THREE LED Lighting Options as detailed below;

##### TOP LIGHTING (ONE SIDE)

For this option we place an LED strip light on the top side of the interior display case. The light will shine downward onto the interior case, highlighting the contents inside.

##### TWO LONGER SIDES

For this option we place an LED strip light along the 2 longer sides of the interior display case. The light will shine from 2 sides of the interior case, bringing more highlighting to the contents inside.

##### INSIDE PERIMETER (ALL 4 SIDES)

For this option we place an LED strip light along the entire Perimeter of the interior display case. The light will shine from all 4 sides of the interior case, bringing more light intensity to the contents being displayed inside.

Model	Overall Size	Viewable Area	Orientation / Hinge Location	Shipping Weight
SIDMCTXLLB-4848	48" Wide x 48" High	41" Wide x 40" High	Square / TOP Hinged	92 LBS