

Outdoor Enclosed Letter Board Message Center 60" x 24" | Standing 2 Door Information Display Board

FOR CURRENT PRICING, VISIT THE ID # LISTED ABOVE

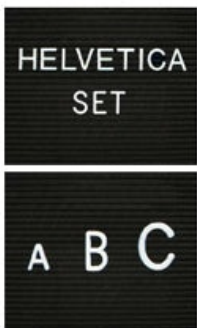
Standing Outdoor Enclosed Letterboard Message Center 60x24 with 2-DOORS Product Details



PROTECTIVE ROOF SHELTER TO PROTECT YOUR MESSAGES



2" Letter Set Included



Additional Letter Sets Available

1/2", 3/4", 1", 2" & 3"

- **Outdoor Enclosed Letter Board**
- Standing Exterior Message Center
- **60 x 24** Letter Board Cabinet Size
- Letter Board with Changeable Letters
- Weather Resistant Information Display Board
- Hinged Double Door Display Case
- Faux Wood Style Display Case + Posts
- **Two Sturdy Hinged Doors**
- **Grooved Vinyl Covered Letterboard Panel**
- **Two 10' Posts: 120" x 4" x 4"**
- Locking Letter Board Display with 2 Keys
- Heavy-duty construction for years of use
- Eco-Friendly and Maintenance Free
- Faux Wood Design - Looks Like real Wood
- High Density Recycled Plastic (polyethylene construction)
- Will not rot, splinter, or crack
- Removable interior letter board panel surface
- Weather Resistant and Made for the Outdoors
- Withstands typical everyday outside elements -Not floodproof
- **Cabinet Weep Holes** help drain any water + helps reduce condensation
- 3/4" wide main frame / 1 1/2" wide door frame
- 5 1/2" exterior depth / 3 3/4" interior depth
- 8 1/2" rain overhang cover depth
- Posts should be secured at least 3 feet into the ground for proper support
- OPTIONAL: **Surface Mount Boots** for installation on concrete surfaces
- **145 piece 2" Helvetica letter / number set included**
- **Call For Custom Outside Message Center Sizes**

Faux Wood Letterboard Message Center Construction Benefits

- Maintenance Free Recycled Plastic
- Will not crack or decay, split, rot or chip
- Impervious to water, chemicals, and insects
- Finished back panel looks great and adds structural integrity

Ordering Options

- Optional vinyl grooved letter boards
- Optional letter & character sets (1/2", 3/4", 1", 2", 3")
- Optional **Surface Mount Boots** for installation on concrete surfaces

Optional LED Lighting

LED LIGHTS BRIGHTER & LONGER LASTING

Go GREEN with our energy saving LED Lights. Interior LED Lights are positioned on the interior to SPOTLIGHT; your posters, signage, postings, menus, and other printed announcements. LED lights are long lasting, and energy efficient. Choose from [Top Lit](#), [2 Longer Sides](#), or the [Entire Interior Perimeter](#) for LED Lighting placement.

- UL approved LED Strip Lighting
- Cool White LED Lighting
- LED Life: 50,000 hours

**We provide a 3-wire cord attached to the ballast / transformer inside the display case. When installing you should use a licensed electrician / installer to bring power to the display. The installer will best decide where to exit the hardware provided (we do not provide an exit hole as we feel its best for the installer to decide the best exit point for power supply).

We offer THREE LED Lighting Options as detailed below;

TOP LIGHTING (ONE SIDE)

For this option we place an LED strip light on the top side of the interior display case. The light will shine downward onto the interior case, highlighting the contents inside.

TWO LONGER SIDES

For this option we place an LED strip light along the 2 longer sides of the interior display case. The light will shine from 2 sides of the interior case, bringing more highlighting to the contents inside.

INSIDE PERIMETER (ALL 4 SIDES).

For this option we place an LED strip light along the entire Perimeter of the interior display case. The light will shine from all 4 sides of the interior case, bringing more light intensity to the contents being displayed inside.

Model	Overall Size	Viewable Area (Per Door)	Shipping Weight	Ships Via
LSD2DLB-6024	60" Wide x 24" High	24 1/2" Wide x 16" High	133 LBS	Freight