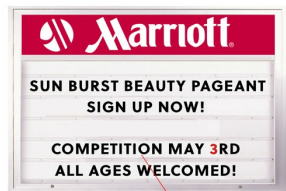


## Value Line Outdoor 96x48 Marquee Reader Boards with Personalized Header | Single Sided

FOR CURRENT PRICING, VISIT THE ID # LISTED ABOVE



### Product Details

- **Outdoor Value Line 96x48 Reader Board Display Case w Header**
- Features full length TOP-SIDE piano hinge (swings upward from Bottom)
- Security cam-locks on Bottom front frame door (2 keys included)
- Overall Reader Board Message Board Case Size: **96" Wide x 48" High**
- Viewing Area where Letter Tracks are installed: **90" Wide x 30 1/4" High**
- Master Frame: 1" Wide
- Door Frame: 2" Wide
- Overall Cabinet Depth: **3 1/8"**
- 5 outdoor treated frame finishes
- Break Resistant Acrylic 1/4" Thick: Perfect for high traffic or public environments
- Removable White Acrylic Backer 1/8" thick
- Letter Tracks Installed onto White Backer (5 Lines of Letters)
- Tracks accept .030 Thick Letters
- **300 - 4" High Letters on 5" High Acrylic (Black Letters with Red Numbers)**
- Provides a vibrant, clear, and informative message for a low cost
- Withstands typical everyday outside elements - Not Water-Proof
- Weep Holes provided on bottom to help drain any water or condensation build-up
- Weather resistant aluminum backing with silicone sealant
- Signs can be Surface Mounted, OR mounted into Brick, Stone or Concrete for inset applications.
- **Value Line Reader Board Ships FREE FREIGHT**
- Enclosed Reader Boards for OUTDOOR use
- **Call for Custom Readerboards Size Options**

### Header Details

- Header is positioned on the Door Frame
- Header Height is 9 3/4"
- 2" Metal Divider placed between the Header and Message Area
- UPPERCASE Helvetica vinyl lettering

- Black lettering on a White Acrylic Header

### IMPORTANT HEADER ORDERING DETAILS

Please type your message in the text box provided below, we will try to keep your message on one line unless otherwise specified. If we can't fit your message on one line we will center your copy on two lines. For the customer that needs a specific font, color or text positioning, you may call customer service with your requests.

#### SELECT THE RIGHT OPTION FOR YOU, AND FOLLOW INSTRUCTIONS

##### STANDARD HEADER (No Charge)

Standard UPPERCASE Black Helvetica Lettering as detailed above. Make sure to spell out your header in the empty **Text Box** above the Green ADD to CART button. Check your grammar & spelling!

##### LEAVE HEADER BLANK (No Charge)

For those customers that will be adding their own header, select this option. Make sure to enter **LEAVE BLANK** in the empty **Text Box** above the Green ADD to CART button.

##### CUSTOM HEADER / LOGO (Upcharge)

This is for or those customers that wish to send us a specific FONT, COLOR, or LOGO. Make sure to enter **CUSTOM LOGO** in the empty **Text Box** above the Green ADD to CART button. We will contact you once the order has been received to instruct you on how to submit the HI-Res EPS File to us.

### Lighting Information

#### LED LIGHTS BRIGHTER & LONGER LASTING

**Go GREEN with our energy saving LED Lights.** Interior LED Lights are positioned on the interior to SPOTLIGHT; your reader board signage, postings, menus, and other announcements. LED lights are long lasting, and energy efficient. Choose **Entire Interior Perimeter** for LED Lighting placement.

- UL approved LED Strip Lighting
- Cool White LED Lighting
- LED Life: 50,000 hours

**\*\*We provide a 3-wire cord attached to the ballast / transformer inside the display case. When installing you should use a licensed electrician /**

installer to bring power to the display. The installer will best decide where to exit the hardwire provided (we do not provide an exit hole as we feel its best for the installer to decide the best exit point for power supply).

**We offer the following LED Lighting Option as detailed below;**

**INSIDE PERIMETER (ALL 4 SIDES).**  
For this option we place an LED strip light along the entire Perimeter of the interior display case. The light will shine from all 4 sides of the interior case, bringing more light intensity to the contents being displayed inside. For this option the header also will illuminate with the TOP installed LED, providing a bright glow.

**Ordering Options**

- **Door Window: Break Resistant or Tempered Glass**
  - Break Resistant Acrylic: 1/8" thick, lightweight (Standard)
  - 1/4" Tempered Glass for public environments and locations that require this added safety feature. (Upcharge)
    - If chosen we will use our heavy duty door that will change one of 2 dimensions by 1/2". We will contact you if you do not indicate which dimension you would like adjusted in your order notes.
    - The viewable area can decrease by 1/2" or the overall size can be increased by 1/2".

Model	Overall Size	Viewable MESSAGE Area	Header Height	Ships Via	Weight
OREAD-HEADER-9648	96" Wide x 48" High x 3 1/8" Deep	90" Wide x 30 1/4"" High	9 3/4"	Freight	150 LBS