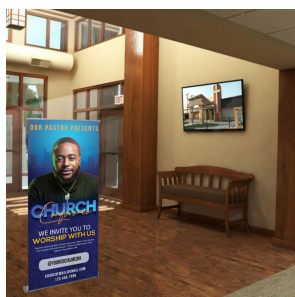
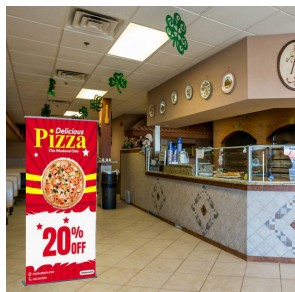


FUJI Retractable Banner Stand | 35.5" Wide Banner | Single Sided Adjustable Bannerstand

FOR CURRENT PRICING, VISIT THE ID # LISTED ABOVE



Product Details

- **Fuji Banner Stand**
- **Retractable Banner Stand**
- Banner Rolls Up and Retracts back into Base
- Adjustable Banner Stand
- Great Value, Affordably Priced Pull up Bannerstand
- Anodized Silver or Black Finish Base with Molded End Caps
- Accepts **35.5 Wide Banner**
- Display One Single-Sided Banner
- Overall Graphic Size: **35.5" Wide x 83.25" High**
- Orbus Orient Design Adjustable Banner Stand
- Variable Height: Bungee Pole Telescopes From **60.5" up to 83.25"**
- Assembled Size: Approximately **37.49" Wide x 85.04" High x 7.28" Deep**
- **Constructed in Durable Aluminum Alloy**
- Lightweight and Portable
- Easy and Quick Setup and Take Down
- Assemble without Tools | No loose Parts to Lose
- **Weighted Base 13 LBS for Stability**
- Adjustable Leveling Feet
- **Includes Premium Top Rail, Hybrid Bungee Telescoping Pole**
- Toolless quick rail combines the ease of the snap rail
- Slide Graphic into Top Rail Slider for Easy Installation
- **Includes Soft Carrying Bag: Padded**
- Fuji Banner Stand 35.5" Wide Best Suited **for Indoor Use Only**
- Lifetime Limited Warranty on Manufacturer Hardware Defect

Light Fixture | Ordering Options

LED Lighting Spotlight Fixture Kits:

Brighten your message with a spot light on your banner sign!
Optional lights attach to the banner stand pole upright with ease.

- Includes the Light Fixture, LED Bulb(s), and a Carrying Case
- UL Approved
- Mounts to a vertical pole
- Curved arm with adjustable head
- Black coated finish
- Projects cool white light
- Low Voltage: 5 Watts
- Dual voltage (100-240V)
- Semi-rigid lighting case to hold light fixture
- Case is foam-lined with padded compartments
- Case holds (2) lights and power supply

Shipping Case | Ordering Options

Heavy Duty Shipping Case :

When using banner stands at various events or locations, this hard bodied case is a good option for making sure your bannerstand travels safely and arrives in good, usable condition.

- Heavy duty, expandable banner stand shipping case
- Carry strap included Made from 100% recyclable materials
- Variable height to accommodate different banner stand widths
- Fits only one stand
- Protective foam padding
- Interior size with foam insert: 12"w x 30.13-47.13"h x 3.75"d
- Exterior size: 14.56" w x 30.38" h x 5.88" d
- Weight 9 LBS

WE PRINT BANNERS!

We Print and Install Graphic Banners into our Retractable Bannerstands

Print and Banner Installation:

ENJOY ONE-STOP SHOPPING!

We offer printing services to ease your display ordering needs. You will receive your bannerstand along with the banner already inserted into the base -Just retract the installed banner and that's it!

**IF ORDERING BANNERS,
LEAD TIME is 2-3 BUSINESS DAYS, ONCE PROOF IS APPROVED.**

See our banner options below:

OPTION 1 | 13oz Anti-Curl Vinyl Graphic

This is the most popular and economical option we offer. Added material incorporated behind the vinyl provides a curl free banner that is ideal for retractable banner stands. The 13oz vinyl allows for straight (non-hemmed) edges and also allows for heavy ink coverage which provides great color clarity and impact to your graphic design.

- 100% Opaque
- Doesn't curl at the edges, resistant to scratches and fading.
- Digitally printed, durable and vibrant inks, high resolution
- Indoor or Outdoor use

OPTION 2 | 8oz Premium Dye Sublimation Fabric Graphic

- Heavy duty fabric, resistant to tearing
- Oxford weave is 100% polyester fabric
- Includes printable polymer coating for long lasting vibrant colors
- Indoor Use Only

OPTION 3 | 11mil Melinex Graphic | Polyester Film

- 11mil Thickness | Polyester Film
- Heavy Duty, resistant to moisture
- Supreme image quality
- Hangs Flat, does not curl.
- Includes printable polymer coating for long lasting vibrant colors
- Indoor Use Only

View Artwork and Template Requirements

**SELECT THE DROP DOWN MENU LABELED [PRINT BANNER GRAPHIC](#)
TO CHOOSE WHAT WHICH BANNER MATERIAL YOU WANT**

Model	Banner Width	Adjustable Height	Ships Via	Product Weight
RBSCAP-355	35.5" Wide	60.5" to 83.25"	UPS	13 LBS