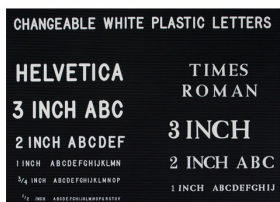


12x18 Changeable Letter Board Upscale Hospitality Satin Aluminum Sign Holder Floorstands

FOR CURRENT PRICING, VISIT THE ID # LISTED ABOVE



Product Details

- **Elegant Hospitality Floor Letter Board**
- **Heavy-Duty, Upscale Directory + Message Board Stand**
- Letter Board with Changeable Letters
- 12x18 Letter Board Size
- **Open Face Frame - No Acrylic Overlay**
- Open Face Allows Easily Change of your Message
- **Black Vinyl Grooved Letter Board Panel**
- Single Post
- Single-Sided Floor Standing Letter Board Frame
- **Frame Size 12" x 18"**
- **Frame Top opening with "Lift-Top" Feature**
- Tamper-Proof concealed sign track design
- All Aluminum rustproof construction
- Made from recycled durable aluminum
- Frame corners are meticulously and permanently joined together
- 14" Diameter. Weighted Steel Base, Provides Maximum Stability
- Includes 3/4" White Helvetica Plastic Letters Sprue Set
- **Overall Height: 53" (Portrait) or 47" (Landscape)**
- Aluminum base cover protects floors from being damaged by the base
- **Made in America**
- 12x18 Hospitality Letter Board Stand Ideal for Restaurants, Hotels
- Open Face 12 x 18 Letterboard Floor Stand Designed [for Indoor Use](#)

Post Details

- Tube Diameter: **1 1/2"**
- Flat Base Diameter: **14"**
- Post / Base Weight: Approximate: **33 LBS**

Ordering Options

- Frame Orientation: Portrait or Landscape
- Optional letter & character sets (1/2", 3/4", 1", 2", 3")

Model	Letterboard Size	Overall Height (Portrait)	Overall Height (Landscape)	Weight	Ships Via
GL39	12" x 18"	53"	47"	33 LBS	UPS