

TEL: 844-409-1131 FAX: 877-842-5126
 E-MAIL: info@floorstands.com

Item ID # GL42

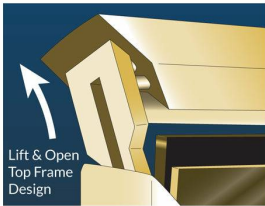
8.5x11 Changeable Letter Board Upscale Hospitality Satin Aluminum Sign Holder Floorstands

FOR CURRENT PRICING, VISIT THE ID # LISTED ABOVE



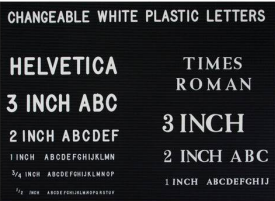
Product Details

- Elegant Hospitality Letter Board Floor Stand
- Heavy-Duty, Aluminum Upscale Message Board Stand
- Black Letter Board with Changeable Letters
- 8.5x11 Letter Board Size
- Open Face Frame - No Acrylic Overlay
- Open Face Allows Easily Change of your Message
- Black Vinyl Grooved Letter Board Panel
- Portable Single Post with Framed Letter Board
- **Weighted Steel Base**, 14" Diameter. Provides Maximum Stability
- Single-Sided Floor Standing Letter Board Frame
- Frame Size 8.5" x 11"
- Frame Top Opening with "Lift-Top" Feature
- Tamper-Proof concealed sign track design
- All Aluminum rustproof construction
- Made from recycled, durable aluminum
- Frame corners are meticulously and permanently joined together
- 14" Diameter. Weighted Steel Base, Provides Maximum Stability
- Includes 3/4" White Helvetica Plastic Letters Sprue Set
- Overall Height: 43" (Portrait) or 40 1/2" (Landscape)
- The aluminum base cover protects floors from being damaged
- Built in America
- 8.5x11 Hospitality Letter Board Stand Ideal for Restaurants, Hotels, and other Locations
- Open Face 8.5 x 11 Letterboard Floor Stand Designed **for Indoor Use**



Post Details

- Tube Diameter: **1 1/2"**
- Flat Base Diameter: **14"**
- Post / Base Weight: Approximate: **31 LBS**



Ordering Options

- Frame Orientation: Portrait or Landscape
- Optional letter & character sets (1/2", 3/4", 1", 2", 3")

Model	Letterboard Size	Overall Height (Portrait)	Overall Height (Landscape)	Weight	Ships Via
GL42	8.5 x 11	43"	40 1/2"	31 LBS	UPS