

45x30 Letter Board Outdoor Message Center with Posts and Sliding Doors | Eco-Design, Recycled, Faux Wood

FOR CURRENT PRICING, VISIT THE ID # LISTED ABOVE

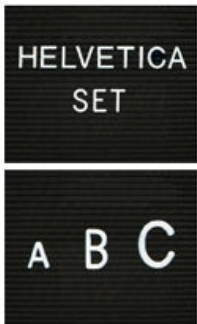


5 1/2" exterior depth



PROTECTIVE ROOF SHELTER TO PROTECT YOUR MESSAGES

2" Letter Set Included



Additional Letter Sets Available

1/2", 3/4", 1", 2" & 3"

Product Details

- Eco-Design Free-Standing Outdoor Letter Board
- 45x30 Enclosed Message Center with Sliding Doors
- Letter Board with Changeable Letters
- **Faux Wood:** Will not rot, splinter, or crack
- Recycled Plastic, Polypropylene Lumber Construction
- It Looks Like real Wood, Only Better and Stronger
- 45 x 30 Display Cabinet Size
- Weather Resistant Message Display Board
- Two Sliding Doors
- Sliding doors roll on nylon wheels with minimal effort
- Front Ratchet Lock, 2 Keys Included
- Heavy-duty construction for years of use
- Post Dimensions (Set of 2): 4" x 4" x 120"
- Eco-Friendly and Maintenance Free
- Faux Wood Design - Looks Like real Wood
- High-Density Recycled Plastic (polyethylene construction)
- Won't rot, splinter, or crack
- Impervious to water, chemicals, insects
- Removable interior Letterboard surface
- Weather Resistant and Made for the Outdoors
- Withstands typical everyday outside elements --not floodproof
- Weep Holes on Cabinet Bottom helps drain any water
- Vents Help reduce any condensation buildup
- Black Grooved Vinyl Letter Board Panel Interior
- Optional: Colorful vinyl-letter board colors.
- 3/4" wide main frame / 1 1/2" wide door frame
- 5 1/2" exterior depth / 3 3/4" interior depth
- 8 1/2" rain cover depth
- Optional: LED Illuminated display cases
- Posts must be secured at least 3 feet into the ground for proper support
- Call For Custom Outdoor Message Center Sizes Outdoor or Indoor

145 piece 2" Helvetica letter/number set included

Recycled Plastic (Faux Wood) Construction Benefits

- Maintenance Free Recycled Plastic
- Will not crack or decay, split, rot or chip
- Impervious to water, chemicals, and insects
- Finished back panel looks great and adds structural integrity

Ordering Options

- Optional vinyl grooved letterboards
- Optional letter & character sets (1/2", 3/4", 1", 2", 3")

Lighting Options

LED LIGHTS BRIGHTER & LONGER LASTING

Go GREEN with our energy saving LED Lights. Interior LED Lights are positioned on the interior to SPOTLIGHT: your posters, signage, postings, menus, and other printed announcements. LED lights are long lasting, and energy efficient. Choose from [Top Lit](#), [2 Longer Sides](#), or the [Entire Interior Perimeter](#) for LED Lighting placement.

- UL approved LED Strip Lighting
- Cool White LED Lighting
- LED Life: 50,000 hours

**We provide a 3-wire cord attached to the ballast / transformer inside the display case. When installing you should use a licensed electrician / installer to bring power to the display. The installer will best decide where to exit the hardware provided (we do not provide an exit hole as we feel its best for the installer to decide the best exit point for power supply).

We offer **THREE LED Lighting Options** as detailed below;

TOP LIGHTING (ONE SIDE)

For this option we place an LED strip light on the top side of the interior display case. The light will shine downward onto the interior case, highlighting the contents inside.

TWO LONGER SIDES

For this option we place an LED strip light along the 2 longer sides of the interior display case. The light will shine from 2 sides of the interior case, bringing more highlighting to the contents inside.

INSIDE PERIMETER (ALL 4 SIDES)

For this option we place an LED strip light along the entire Perimeter of the interior display case. The light will shine from all 4 sides of the interior case, bringing more light intensity to the contents being displayed inside.

Model	Overall Size	Product Weight (with Posts)	Ships Via
LSDMCLB-4530	45" Wide x 30" High	165 LBS	Freight