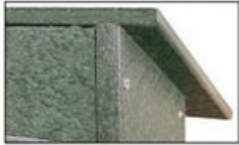


Eco-Design Outdoor Message Center Letter Board 32 x 48 with Two Posts | Faux Wood LEFT Hinged Single Door Information Board

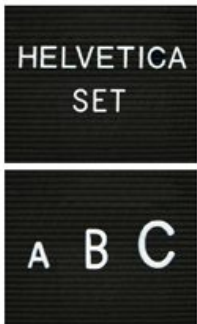
FOR CURRENT PRICING, VISIT THE ID # LISTED ABOVE



BACK VIEW



2" Letter Set Included



Additional Letter Sets Available

1/2", 3/4", 1", 2" & 3"

Product Details

- Standing Outdoor Message Center with Two Posts
- Letter Boards with Changeable Letters
- 32x48 Enclosed Locking Cabinet: Single Door
- Eco-Design, Recycled, Faux Wood Construction
- Weather Resistant Information Message Board
- 32" Wide x 48" High Message Display Cabinet Overall Size
- Eco-Friendly and Maintenance Free
- High-Density Recycled Plastic (polyethylene construction)
- Faux Wood Style Display Case and Posts
- Faux Wood Design Looks Like real Wood, But Longer Lasting
- Will not rot, splinter, or crack
- Impervious to water, chemicals, insects
- Heavy-duty construction for years of use
- Single LEFT Hinged Door
- Grooved Letter Board
- Post Dimensions (Set of 2): 4" x 4" x 120"
- Locking Letter Board Display
- Front Frame Right Side Lock, 2 Keys Included
- Heavy-duty construction for years of use
- Withstands typical everyday outside elements: Not flood-proof
- Bottom Weep Holes helps expel any water and condensation
- Removable interior Letter Board Panel surface
- 3/4" wide main frame / 1 1/2" wide door frame
- 5 1/2" exterior depth / 3 3/4" interior depth
- 8 1/2" rain overhang cover depth
- Posts should be secured at least 3 feet into the ground for proper support
- **Optional** Surface Mount Boots for installation on concrete surfaces
- **Optional** LED Illuminated display case
- 145 piece 2" Helvetica letter/number set included
- Call for Custom Eco-Design Outdoor Enclosed Letter Boards

Recycled Plastic (Faux Wood) Construction Benefits

- Maintenance Free Recycled Plastic
- Will not crack or decay, split, rot or chip
- Impervious to water, chemicals, and insects
- Finished back panel looks great and adds structural integrity

Ordering Options

- Optional vinyl grooved letterboards
- Optional letter & character sets (1/2", 3/4", 1", 2", 3")
- **OPTIONAL Surface Mount Boots** for installation on concrete surfaces

Lighting Options

**LED LIGHTS BRIGHTER & LONGER LASTING**

Go GREEN with our energy saving LED Lights. Interior LED Strip Lights are positioned on the interior to SPOTLIGHT; your posters, signage, postings, menus, and other printed announcements. UL rated LED lights are long lasting, and energy efficient. Choose from Top Lit, 2 Longer Sides or the Entire Interior Perimeter for LED Lighting placement.

- UL approved LED Strip Lighting
- Cool White LED Lighting
- LED Life: 50,000 hours

\*\*We provide a 3-wire cord attached to the ballast / transformer inside the display case. When installing you should use a licensed electrician / installer to bring power to the display. The installer will best decide where to exit the hardwire provided (we do not provide an exit hole as we feel its best for the installer to decide the best exit point for power supply).

**We offer THREE LED Lighting Options as detailed below;**

**TOP LIGHTING (ONE SIDE)**

For this option we place an LED strip light on the top side of the interior display case. The light will shine downward onto the interior case, highlighting the contents inside.

**TWO LONGER SIDES**

For this option we place an LED strip light along the 2 longer sides of the interior display case. The light will shine from 2 sides of the interior case, bringing more highlighting to the contents inside.

**INSIDE PERIMETER (ALL 4 SIDES).**

For this option we place an LED strip light along the entire Perimeter of the interior display case. The light will shine from all 4 sides of the interior case, bringing more light intensity to the contents being displayed inside.

Model	Overall Size	Viewable Area	Orientation / Hinge Location	Shipping Weight (with Posts)
LSIDMCLB-3248	32" Wide x 48" High	25 1/4" Wide x 39 3/4" High	Portrait / LEFT Hinged	167 LBS