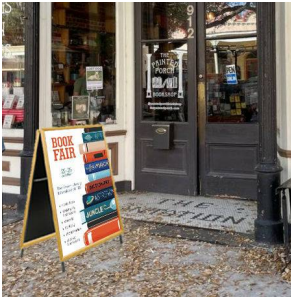


A-Frame 24x36 Sign Holder | WOOD Snap Frame 1 1/4" Wide

FOR CURRENT PRICING, VISIT THE ID # LISTED ABOVE
FREE SHIPPING

Product Details



- **Wooden A-Frame Sign Stand**
- A Frame Holds 24" x 36" Poster / Sign Size
- **Faux Wood Finish Looks like Real Wood Frame**
- Fast Change Snap Open Sign Frames
- All 4 frame rails snap-open for easy front loading insert changes
- **Snap Frame Orientation: Portrait or Landscape (You Choose)**
- Floorstand Snap Frame: Singled Sided (1 Frame) or Double Sided (2 Frames)
- Aluminum Snap Frame Profile: **1 1/4" Wide**
- Accepts 4 Printed Thicknesses: **select THIN | 1/8" | 3/16" | 1/4"**
- Viewable Area: Frame Overlaps Poster Insert by 3/8" all around
- **3** Wooden Simulated Snap Frame Finishes: CHERRY | OAK | MAPLE
- **No Tools Required!** All four frame sides snap-open easily by hand
- **Snap Frame(s) Assembled onto A-Frame when Shipped**

- **INCLUDED .040 Backing Board** (for THIN, 1/8" and 3/16" Posters Thicknesses)
Thin, durable backer board provides rigidity for your poster

- **INCLUDED .020 Clear PETG** (for THIN, 1/8" and 3/16" Posters Thicknesses)
Clear overlay is to protect your poster insert
- Aluminum snap-open displays are for **INDOOR or **OUTDOOR** use

**Make sure you laminate your insert material if going outdoors

**PLEASE NOTE: the poster frame and stand are weather resistant, not waterproof or windproof.

Aluminum Pole Details

The A-Frame Stand dimensions will differ sometimes, depending on the Sign Frame Size & Orientation.

What is an A-Frame spread referred to? ()

For **Portrait** Sign Frames 24" Wide x 36" High

- Overall A-Frame Height: 45" high when stand is spread and locked into position
- The overall spread when the aframe is fully opened is 30" wide

For **Landscape** Sign Frames 36" Wide x 24" High

- Overall A-Frame Height: 33" high when stand is spread and locked into position
- The overall spread when the aframe is fully opened is 24" wide

- **A-Frame Poster Sign Holder Stand holds 24x36 Wood Frames**
- Collapsible sign holder with locking hinges make for easy moving
- Heavy duty support stays keep the A-Frame upright
- **1" Square Tubing Poles**
- Plastic Protective End Caps on Top & Bottom of Extruded Legs
- Order with **Single Frame or Two Frames (for 2-sided viewing)**
- **Aluminum Poles (legs) comes in a Silver or Black Finishes**
- Snap Frames ship attached to an aluminum, rust proof **A-Frame Stand**
- Frame and Base ship assembled
- A-Frame stand extremely stable, but may need added weight if used outdoors*

*A-Frame Stands are ideal for indoor use. If you decide to place outdoors, the metal finish is suitable for inclement weather.

**PLEASE NOTE: the poster frame and stand are weather resistant, not waterproof or windproof.

Mounted Graphic Details

THIN Posters

*This option refers to posters which are 1/16" thick or thinner.

All frames will include a .040 Black Backer Board

All frames will include a .020 Clear Overlay

1/8" Mounted Graphic Insert

*This thickness is ideal for larger posters, where buckling may occur on thinner paper stock. It still allows room for a backer and protective overlay.

All frames will include a .040 Black Backer Board

All frames will include a .020 Clear Overlay

3/16" Mounted Graphic Insert

*This thickness is ideal for larger posters, where buckling may occur on thinner paper stock. It still allows room for a backer and protective overlay.

All frames will include a .040 Black Backer Board

All frames will include a .020 Clear Overlay

1/4" MAX Mounted Graphic Insert

*This thickness is ideal for larger posters, where buckling may occur on thinner paper stock.

.040 Black Backer Board **NOT INCLUDED** (can not fit)

.020 Clear Overlay **NOT INCLUDED** (can not fit)

Customize your Snap Frames

Model	Frame (Insert Size)	Viewable Area	Overall Height (Portrait Frame)	Overall Height (Landscape Frame)	Total Weight (1 Frame)	Total Weight (2 Frames)
SSMCWOOD-AFRAME-2436	24" x 36"	23 1/4" x 35 1/4"	45"	33"	16 LBS	28 LBS