

Foldaway Art Bins | Poster and Print Floor Racks + Print Protector Sleeves

FOR CURRENT PRICING, VISIT THE ID # LISTED ABOVE



Product Details

- Durable **STEEL** construction
- Art Rack Colors Available: [Black](#), [White](#), [Gray](#) or [Granite](#)
- Recommended Print Protector Size: 26" x 32"
- Tray Width 7 1/2"
- **ANY PRINT PROTECTOR SIZE SMALLER THAN 26" X 32" MAY FALL THROUGH THE ART BIN**

Dimensions

Art Rack Display **Base**: 26" x 25 1/2"

Art Rack Display **Height**: 41 1/4"

Art Rack Display **Weight**: 25 LBS



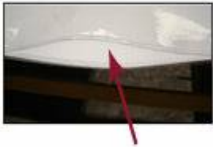
Ordering Options

Poster Sleeve Protectors:

- .008 mil clear flexible vinyl
- 2-sided 50 pt. thick, ph neutral cardboard print divider
- Extra locked stitching at stress points - prevents unraveling
- Cardboard Divider Colors: (Available in White or Black, depending on the size)

Plastic Poster Sleeve Sizes

16" x 20" | 18" x 24" | 20" x 26" | 24" x 36" | 26" x 32"



.008 CLEAR VINYL PROTECTOR

