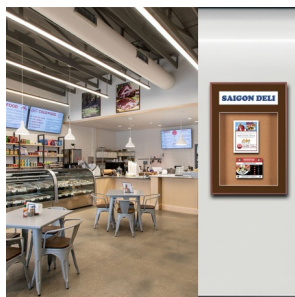


## Designer 32 x 44 Metal Bulletin Board SwingFrames with Header & Lights

FOR CURRENT PRICING, VISIT THE ID # LISTED ABOVE



### Product Details

- 32" x 44" Enclosed Bulletin Board Display Cabinet
- Wall Mount 32 x 44 One Door Frame
- Patented swing-open frame system (opens right to left)
- Features concealed hinges and Gravity Lock
- Metal Frame Profile: 5/8" Wide
- Overall Bulletin Board Frame Depth: 3 7/8"
- Interior Useable Depth: 2"
- (5) Aluminum frame finishes available
- Beveled Matboard: Complimentary color to metal frame
- Break Resistant Acrylic: Ideal for high traffic public locations
- 1/4" natural cork board mounted on 1/4" hardboard
- Installs Easily: Mounting hardware included
- Designer Bulletin Boards w Header and Light are for **INDOOR USE ONLY**
- [Call to Buy Custom Bulletin Boards](#)

### Header Details

- Helvetica vinyl lettering is centered and provided on a 6" removable header

- White lettering on a black background
- Black lettering on a white background

### IMPORTANT HEADER ORDERING DETAILS

Please type your message in the text box provided below, we will try to keep your message on one line unless otherwise specified. If we can't fit your message on one line we will center your copy on two lines. For the customer that needs a specific font, color or text positioning, you may call customer service with your requests.

#### SELECT THE RIGHT OPTION FOR YOU, AND FOLLOW INSTRUCTIONS

##### STANDARD HEADER (No Charge)

Standard UPPERCASE Black Helvetica Lettering as detailed above. Make sure to spell out your header in the empty **Text Box** above the Green ADD to CART button. Check your grammar & spelling!

##### LEAVE HEADER BLANK (No Charge)

For those customers that will be adding their own header, select this option. Make sure to enter **LEAVE BLANK** in the empty **Text Box** above the Green ADD to CART button.

##### CUSTOM HEADER / LOGO (Upcharge)

This is for or those customers that wish to send us a specific FONT, COLOR, or LOGO. Make sure to enter **CUSTOM LOGO** in the empty **Text Box** above the Green ADD to CART button. We will contact you once the order has been received to instruct you on how to submit the HI-Res EPS File to us.

### Lighting Specifications

- UL approved LED Strip Lighting
- LED Color: Cool White
- LED Life: 50,000 hours (5 Year Warranty)
- LED Strip Light is positioned across the top of the display and shines downward
- Cord exit is positioned out the back of the display case ([Top Left Corner](#))
- 12 Volt Plug-In Adapter

### Ordering Options

- Frame Orientation: Portrait or Landscape
- Fabric Covered Bulletin Board
- Lockable Bulletin Board - Side Plunge Lock & Key

Model	Interior Size	Overall Size (Portrait)	Overall Size (Landscape)	Viewable Area	Ships Via	Shipping Weight
SFMBHL-3244	32" x 44"	35 3/4" x 54 1/2"	42 1/4" x 47 1/2"	30" x 42"	FedEx	51