

17x22 Poster Snap Open Frames (1 3/4" Security-Style) for MOUNTED GRAPHICS

FOR CURRENT PRICING, VISIT THE ID # LISTED ABOVE
FREE SHIPPING

Product Details

- 1 3/4" Security Snap Poster Display Frame with Pallet Tool
Fits **17 x 22 Posters**
- Quick-Changing, all 4 frame rails snap-open for easy poster changes
- Front Loading Frame for posters and other signage
- Snap Frame Profile: **1 3/4" Wide**
- Narrow profile offers 3/4" overall off the wall depth
- **Accepts 3 Printed Thicknesses: 1/8" | 3/16" | 1/4"**
- Viewable Area: Moulding overlaps poster insert by 13/16" all around
- (3) Aluminum snap frame finishes available
- .040 Backing Board: Thin, durable backer board provides rigidity for your poster
- .020 clear PETG overlay is included to protect your poster insert
- **Security Tool Included!** Ideal for high traffic, public environments.
- SwingSnap poster frames can mount either **Portrait or Landscape**
- Installs Easily: Punched holes in frame allow for easy surface mounting
- Hanging hardware is included

Aluminum snap-open displays are for **INDOOR** or ****OUTDOOR** use
**Make sure you laminate your insert material if going outdoors
**Poster Snap Frames are weather resistant...not water-proof

Mounted Graphic Details

1/8" Mounted Graphic Insert

All frames will include a .040 Black Backer Board

All frames will include a .020 Clear Overlay

3/16" Mounted Graphic Insert

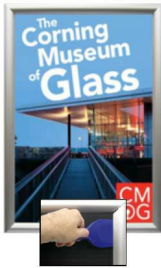
All frames will include a .040 Black Backer Board

All frames will include a .020 Clear Overlay

1/4" MAX Mounted Graphic Insert

.040 Black Backer Board **NOT INCLUDED** (can not fit)

.020 Clear Overlay **NOT INCLUDED** (can not fit)



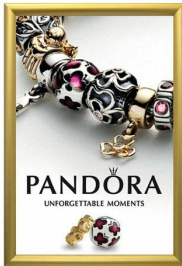
SECURITY TOOL PROVIDED



PLACE PALLET TOOL THROUGH EDGE OF SNAPFRAME



LIFT TO SNAP OPEN



Model	Insert Size	Overall Size	Viewable Area	Ships Via	Shipping Weight	How is Frame Shipped?
SSTR134MT-1722	17" x 22"	18 3/4" x 23 3/4"	15 3/8" x 20 3/8"	UPS	7	Assembled

