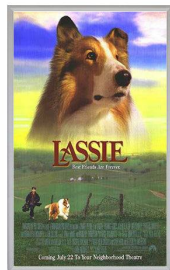


**20x20-Poster Snap Frames (1 5/8" Wide Profile) for MOUNTED GRAPHICS**

FOR CURRENT PRICING, VISIT THE ID # LISTED ABOVE  
FREE SHIPPING



Product Details

- Quick-Changing, all 4 frame rails snap-open for easy poster changes
- Front Loading Frame for **20x20 posters** and other signage
- Snap Frame Profile: **1 5/8" Wide**
- Narrow profile offers 11/16" overall off the wall depth
- **Accepts 3 Printed Thicknesses: 1/8" | 3/16" | 1/4"**
- Viewable Area: Moulding overlaps poster insert by 3/4" all around
- (2) Aluminum snap frame finishes available
- .040 Backer Board: Thin, durable backer board provides rigidity for your poster
- .020 clear PETG overlay is included to protect your poster insert
- No Tools! All four frame sides snap-open easily by hand
- SwingSnap poster frames can mount either **Portrait or Landscape**
- Installs Easily: Punched holes in frame allow for easy surface mounting
- Hanging hardware is included

- Aluminum snap-open displays are for **INDOOR** or **\*\*OUTDOOR** use

**\*\*Make sure you laminate your insert material if going outdoors**  
**\*\*Poster Snap Frames are weather resistant...not water-proof**

Mounted Graphic Details

**1/8" Mounted Graphic Insert**

All frames will include a .040 Black Backer Board

All frames will include a .020 Clear Overlay

**3/16" Mounted Graphic Insert**

All frames will include a .040 Black Backer Board

All frames will include a .020 Clear Overlay

**1/4" MAX Mounted Graphic Insert**

.040 Black Backer Board **NOT INCLUDED** (can not fit)

.020 Clear Overlay **NOT INCLUDED** (can not fit)

Ceiling Mount Options

- **Common Applications:** Displaying "suspended" advertisements or menu's in front of windows or behind a counter or cash wrap is a great way to grab someone's attention and drive traffic and sales to your place of business.

- We offer the option of installing "D" Rings onto the Snap Frame. This allows you the option of suspending your frame from the ceiling. Both the short side and long side will have "D" Rings installed, giving you the option to hang and display your snap frame in Portrait or Landscape orientation.

- You have the choice of silver chain links in 2 FEET, 4 FEET or 6 FEET Lengths. Custom color chains and lengths are available upon request.

**\*\*NOTE:** these products are **SINGLE SIDED** displays. If you require double sided displays to show two separate advertisements, then please Contact Us to quote out your size and specifications.

**\*\*Due to the variety of ceiling surfaces, we advise you to purchase the appropriate hooks at your local hardware store. We DO NOT include or offer the Ceiling Hooks that the Chains will attach to.**

Customize your Snap Frames

Model	Insert Size	Overall Size	Viewable Area	Ships Via	Shipping Wt	Howis Frame Shipped?
SSMC158MT-2020	20" x 20"	21 3/4" x 21 3/4"	18 1/2" x 18 1/2"	FedEx	7	Assembled