

## 16 x 16 Poster Snap Frame SwingSnaps (with Security Screws)

FOR CURRENT PRICING, VISIT THE ID # LISTED ABOVE  
FREE SHIPPING

### Product Details

**\*ALL 4 FRAME SIDES HAVE A SECURITY SCREW PLACED INTO THE CENTER OF EACH FRAME RAIL. THESE SCREWS SECURE THE SAFETY OF YOUR POSTING AND PREVENT ANY TAMPERING.**

- 16x17 Quick-Changing, all 4 frame rails snap-open for easy poster changes
- Fits 16 x 16 Posters
- Front Loading Frame for 16x16 posters and other signage
- Snap Frame Profile: 1 1/4" Wide
- Narrow profile offers 11/16" overall off the wall depth
- Accepts printed material up to 1/16" thick
- Viewable Area: Moulding overlaps poster insert by 3/8" all around
- (9) Aluminum snap frame finishes available
- .040 Backing Board: Thin, durable backer board provides rigidity for your poster
- .020 clear PETG overlay is included to protect your poster insert
- **Allen Wrench Tool is included to help remove and secure your inserts.**
- SwingSnap poster frames can mount either Portrait or Landscape
- Installs Easily: Punched holes in frame allow for easy surface mounting
- Hanging hardware is included

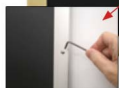
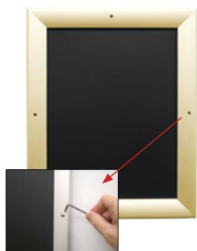
- Aluminum snap-open displays are for **INDOOR** or **\*\*OUTDOOR** use

**\*\*Make sure you laminate your insert material if going outdoors**

**\*\*Poster Snap Frames are weather resistant...not water-proof**

### Customize your Snap Frames

- [Call to customize Security Screw Poster Snap Frames!](#)



Model	Insert Size	Overall Size	Viewable Area	Ships Via	Shipping Wt	How is Frame Shipped?
SSMCSS-1616	16" x 16"	17 3/4" x 17 3/4"	15 1/4" x 15 1/4"	UPS	6	Assembled