

## 20 x 20 Poster Snap Frame SwingSnaps (with Security Screws)

FOR CURRENT PRICING, VISIT THE ID # LISTED ABOVE  
FREE SHIPPING

### Product Details

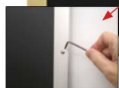
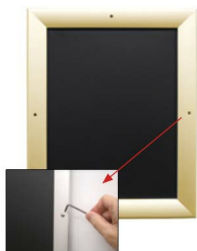
**\*ALL 4 FRAME SIDES HAVE A SECURITY SCREW PLACED INTO THE CENTER OF EACH FRAME RAIL. THESE SCREWS SECURE THE SAFETY OF YOUR POSTING AND PREVENT ANY TAMPERING.**

- 20x20 Quick-Changing, all 4 frame rails snap-open for easy poster changes
- Fits 20 x 20 Posters
- Front Loading Frame for 20x20 posters and other signage
- Snap Frame Profile: 1 1/4" Wide
- Narrow profile offers 11/16" overall off the wall depth
- Accepts printed material up to 1/16" thick
- Viewable Area: Moulding overlaps poster insert by 3/8" all around
- (9) Aluminum snap frame finishes available
- .040 Backing Board: Thin, durable backer board provides rigidity for your poster
- .020 clear PETG overlay is included to protect your poster insert
- Allen Wrench Tool is included to help remove and secure your inserts.
- SwingSnap poster frames can mount either Portrait or Landscape
- Installs Easily: Punched holes in frame allow for easy surface mounting
- Hanging hardware is included

- Aluminum snap-open displays are for **INDOOR** or **\*\*OUTDOOR** use

**\*\*Make sure you laminate your insert material if going outdoors**

**\*\*Poster Snap Frames are weather resistant...not water-proof**



### Customize your Snap Frames

- [Call to customize Security Screw Poster Snap Frames!](#)



Model	Insert Size	Overall Size	Viewable Area	Ships Via	Shipping Wt	How is Frame Shipped?
SSMCSS-2020	20" x 20"	21 3/4" x 21 3/4"	19 1/4" x 19 1/4"	UPS	7	Assembled