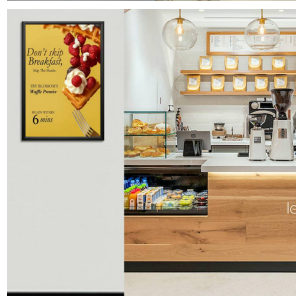
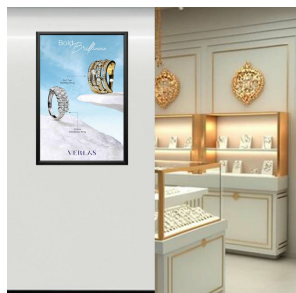
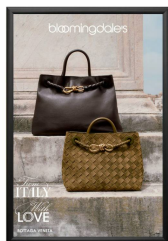


**SwingSnap 22x28 Poster Snap Frame Security-Style includes Pallet Tool to Snap Open 1 1/4" Metal Frame Profile**

FOR CURRENT PRICING, VISIT THE ID # LISTED ABOVE  
FREE SHIPPING

**Product Details**



- 22x28 Security-Style Snap Frame with Pallet Tool
- Hold 22 x 28 Posters and Graphic Signage Size
- Pallet Tool Used for Flipping Open Tight Frame Sides
- Quick-Changing, all 4 Frame Rails Snap Open
- Wall Mount Snap Frame
- Front Load Graphic Materials into Open Snap Frame
- Aluminum Snap Frame Profile: **1 1/4" Wide**
- Narrow profile offers 11/16" Overall Off-the-Wall Depth
- Accepts Printed Material Up to **1/16" Thick**
- Viewable Area: Moulding Overlaps Poster Insert by 3/8" All Around
- Three Aluminum Snap Frame Finishes
- .040 Backing Board: Provides Rigidity for Thin Sheet Poster Insert
- .020 clear PETG Overlay Included to Protect 22x28 graphic Insert
- Pallet Tool Included with Frame Order
- SwingSnap 22x28 Poster Snap Frame Mounts **Portrait** or **Landscape**
- Installs Easily: Punched Holes in Frame for Wall Surface Mounting
- Hanging Hardware (Screws + Wall Anchors) Included
- **Free-Shipping**
- Aluminum Snap Open Display Frame for **\*\*Indoor** or **\*\*Outdoor** Use

**\*\*Be sure to laminate your insert material if going outdoors.**  
**\*\*Poster Snap Frames are weather resistant. Not waterproof.**

**Customize your Snap Frames**

- [Contat Us for Custom Security SwingSnap Poster Snap Frame Sizes](#)

Model	Insert Size	Overall Size	Viewable Area	Ships Via	Shipping Wt	How is Frame Shipped?
SSTR-2228	22" x 28"	23 3/4" x 29 3/4"	21 1/4" x 27 1/4"	UPS	9	Assembled