

12x16 Frame Beveled Top Load or Side Load Poster Frame Sign Holders

FOR CURRENT PRICING, VISIT THE ID # LISTED ABOVE
FREE SHIPPING

Product Details



- **12x16 Frame**
- **Wall Sign Holder and Poster Frame**
- **Accepts 12x16 poster and sign sizes**
- Quick-Change Frame 12x16
- **Easy Slide-In Sign Frame Design**
- **Your Choice of Top or Side loading poster changes**
- Beveled Metal Frame Profile: **7/8" Wide**
- Narrow frame design has 5/8" overall off the wall depth
- Slot Opening: **1/4"** (max insert thickness)
- Frame size is slightly larger than the 8x10 poster inserts
- Viewable Area: Moulding overlaps poster insert by 5/16" all around
- 2 Aluminum frame finishes available
- **Frames can mount either Portrait or Landscape**
- Installs Easily: Punched holes in frame allow for easy surface mounting
- Hanging hardware screws are included
- Top Load display frames **12 x 16 for INDOOR or OUTDOOR use**
- **Call for Custom Size Quick Change Poster Display and Sign Frames**

****Make sure you laminate your insert material if going outdoors**
****Top Load Sign Frames are weather resistant...not water-proof**

Ordering Options

- Frame Orientation: Portrait or Landscape
- Backing Board: 3/16" thick white coroplast (provides rigidity to your poster)

- (this is recommended if your poster is not mounted)

Acrylic Window

(backer board & acrylic are used to sandwich your insert)

- **Clear Acrylic (.040 Thickness)...(See Pricing)**

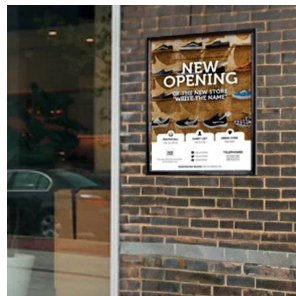
- Strong lightweight acrylic provides a clear viewing window

- **Non-Glare (.060 Thickness)...(See Pricing)**

- Reduces glare from natural or artificial light

- **Break Resistant (.080 Thickness)...(See Pricing)**

- High Impact acrylic, perfect for high traffic or public environments



Model	Insert Size	Overall Size	Viewable Area	Ships Via	Shipping Weight
TLBS-1216	12" x 16"	13 1/8" x 17 1/8"	11 1/2" x 15 1/2"	FedEx	8