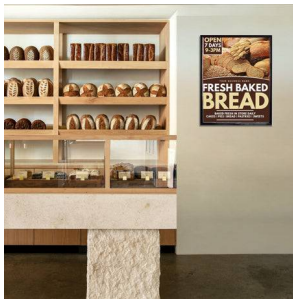
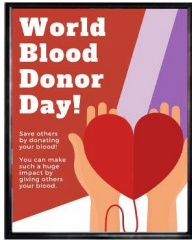


24x32 Frame Beveled Top Load or Side Load Poster Frame Sign Holders

FOR CURRENT PRICING, VISIT THE ID # LISTED ABOVE
FREE SHIPPING



Product Details

- **24x32 Frame**
- **Wall Sign Holder and Poster Frame**
- **Accepts 24x32 poster and sign sizes**
- **Quick-Change Frame 24x32**
- **Easy Slide-In Sign Frame Design**
- **Your Choice of Top or Side loading poster changes**
- **Beveled Metal Frame Profile: 7/8" Wide**
- **Narrow frame design has 5/8" overall off the wall depth**
- **Slot Opening: 1/4"** (max insert thickness)
- **Frame size is slightly larger than the 24x32 poster inserts**
- **Viewable Area: Moulding overlaps poster insert by 5/16" all around**
- **2 Aluminum frame finishes available**
- **Frames can mount either Portrait or Landscape**
- **Installs Easily: Punched holes in frame allow for easy surface mounting**
- **Hanging hardware screws are included**
- **Top Load display frames 24 x 32 for INDOOR or OUTDOOR use**
- **Call for Custom Size Quick Change Poster Display and Sign Frames**

****Make sure you laminate your insert material if going outdoors**
****Top Load Sign Frames are weather resistant...not water-proof**

Ordering Options

- **Frame Orientation: Portrait or Landscape**
- **Backing Board: 3/16" thick white coroplast (provides rigidity to your poster)**

- (this is recommended if your poster is not mounted)

Acrylic Window

(backer board & acrylic are used to sandwich your insert)

- **Clear Acrylic (.040 Thickness)...(See Pricing)**

- Strong lightweight acrylic provides a clear viewing window

- **Non-Glare (.060 Thickness)...(See Pricing)**

- Reduces glare from natural or artificial light

- **Break Resistant (.080 Thickness)...(See Pricing)**

- High Impact acrylic, perfect for high traffic or public environments

Model	Insert Size	Overall Size	Viewable Area	Ships Via	Shipping Weight
TLBS-2432	24" x 32"	25 1/8" x 33 1/8"	23 1/2" x 31 1/2"	FedEx	14